



United States Department of Agriculture  
Agricultural Marketing Service  
Dairy Programs  
Market Administrator

**Southeast Marketing Area  
Federal Order No. 7**

**2014 ANNUAL STATISTICS**

**Patrick S. Clark**  
Market Administrator  
1550 North Brown Road, Suite 120  
Lawrenceville, Georgia 30043  
[www.fmmlanta.com](http://www.fmmlanta.com)

# TABLE OF CONTENTS

Southeast Marketing Area Map .....	1
Receipts and Classification of Producer Milk .....	2
Receipts and Classification of Other Source Milk, Overages, and Opening Inventories .....	3
Classification of Total Receipts .....	4
Class I Utilization by Pool Handlers .....	5
Class I Packaged Products Distributed In and Out of Marketing Area .....	6
Class I Packaged Products Distributed In Marketing Area .....	6
Class I Utilization – Packaged Disposition by Product .....	7
Class II Utilization by Pool Handlers .....	8
Class III Utilization by Pool Handlers .....	9
Class IV Utilization by Pool Handlers .....	10
Announced Federal Order Class and Uniform Prices .....	11
AMS Dairy Product Price Averages Used In Federal Milk Order Price Formulas .....	12
Producer Milk and Number of Producers by State and County - May 2014 .....	13
Producer Milk and Number of Producers by State and County - December 2014 .....	17
Transportation Credit Balancing Fund Summary.....	21
2014 Pool Handlers .....	22
2014 Nonpool Handlers with Route Disposition in the Marketing Area .....	25

The data presented herein represents a compilation of general information pertaining to the marketing of milk in the Southeast Marketing Area during 2014. Except for the corrections of mathematical and other obvious errors, the data presented were taken from reports of receipts and utilization, payroll reports, and reports of nonpool handlers that were submitted to the office of the Market Administrator as well as publications released by this office.

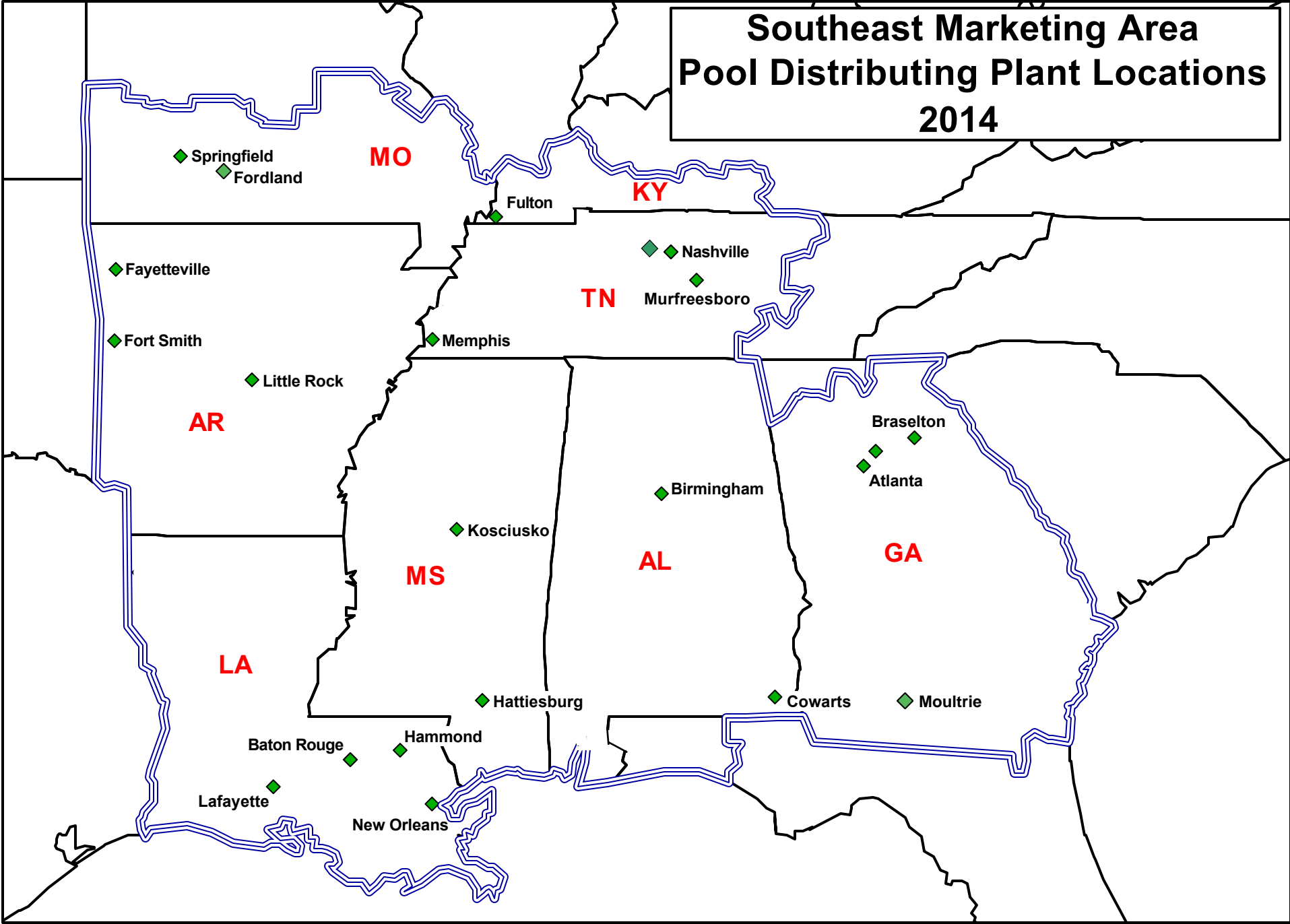
This information is prepared pursuant to Section §1000.25 (c)(8) of the General Provisions of Federal Milk Marketing Orders, Part 1000 which is incorporated by reference and made a part of Federal Order Number 7. Part 1000 states that the Market Administrator shall “Prepare and disseminate publicly for the benefit of producers, handlers, and consumers such statistics and other information concerning operation of the order and facts relevant to the provisions thereof (or proposed provisions) as do not reveal confidential information.”

## **Non-Discrimination Policy**

The U.S. Department of Agriculture (USDA) prohibits discrimination against its customers, employees, and applicants for employment on the bases of race, color, national origin, age, disability, sex, gender identity, religion, reprisal, and where applicable, political beliefs, marital status, familial or parental status, sexual orientation, or all or part of an individual's income is derived from any public assistance program, or protected genetic information in employment or in any program or activity conducted or funded by the Department. (Not all prohibited bases will apply to all programs and/or employment activities.)

If you wish to file an employment complaint, you must contact your agency's [EEO Counselor](#) (PDF) within 45 days of the date of the alleged discriminatory act, event, or in the case of a personnel action. Additional information can be found online at [http://www.ascr.usda.gov/complaint\\_filing\\_file.html](http://www.ascr.usda.gov/complaint_filing_file.html). If you wish to file a Civil Rights program complaint of discrimination, complete the [USDA Program Discrimination Complaint Form](#) (PDF), found online at [http://www.ascr.usda.gov/complaint\\_filing\\_cust.html](http://www.ascr.usda.gov/complaint_filing_cust.html), or at any USDA office, or call (866) 632-9992 to request the form. You may also write a letter containing all of the information requested in the form. Send your completed complaint form or letter to us by mail at U.S. Department of Agriculture, Director, Office of Adjudication, 1400 Independence Avenue, S.W., Washington, D.C. 20250-9410, by fax (202) 690-7442 or email at [program.intake@usda.gov](mailto:program.intake@usda.gov).

# Southeast Marketing Area Pool Distributing Plant Locations 2014



**SOUTHEAST MARKETING AREA  
FEDERAL ORDER NO. 7**

**RECEIPTS AND CLASSIFICATION OF PRODUCER MILK AND BUTTERFAT**

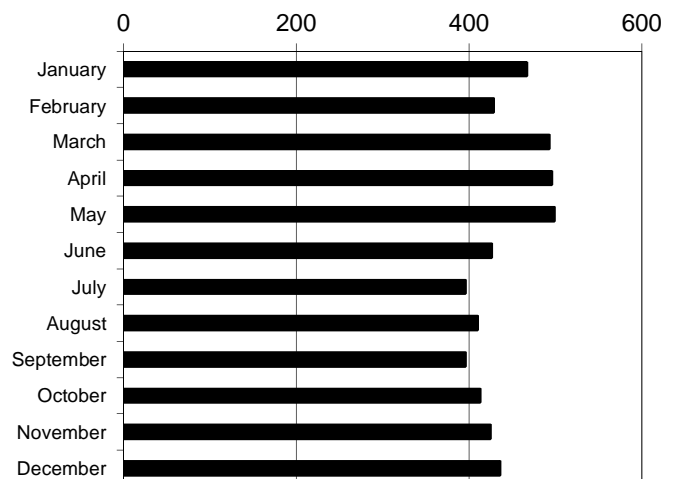
2014	CLASS I			CLASS II		
	PRODUCT POUNDS	%	BUTTERFAT POUNDS	PRODUCT POUNDS	%	BUTTERFAT POUNDS
January	364,961,448	78.12%	7,304,019	52,564,914	11.25%	4,366,449
February	316,539,475	73.77%	6,269,136	47,709,492	11.12%	4,271,641
March	328,500,995	66.61%	6,548,154	59,717,774	12.11%	5,811,930
April	327,000,557	65.90%	6,386,426	61,362,436	12.37%	5,751,941
May	319,892,542	64.10%	6,458,741	56,758,586	11.37%	5,963,721
June	293,083,147	68.64%	6,331,300	50,414,241	11.81%	5,273,033
July	312,071,660	78.73%	6,747,424	43,028,822	10.86%	4,952,881
August	324,524,034	79.01%	6,414,763	42,487,449	10.34%	4,924,100
September	325,260,209	82.12%	6,344,297	38,870,117	9.81%	5,051,767
October	334,618,400	81.02%	6,620,660	47,912,975	11.60%	5,240,121
November	319,177,839	75.13%	6,596,427	47,862,208	11.27%	5,017,381
December	339,340,284	77.80%	7,354,708	47,060,230	10.79%	4,563,251
<b>Total</b>	<b>3,904,970,590</b>	<b>73.83%</b>	<b>79,376,055</b>	<b>595,749,244</b>	<b>11.26%</b>	<b>61,188,216</b>

2014	CLASS III			CLASS IV		
	PRODUCT POUNDS	%	BUTTERFAT POUNDS	PRODUCT POUNDS	%	BUTTERFAT POUNDS
January	30,037,101	6.43%	2,001,616	19,606,742	4.20%	4,019,354
February	34,798,408	8.11%	1,533,675	30,065,686	7.01%	4,053,025
March	51,659,601	10.48%	2,101,427	53,286,157	10.80%	3,640,539
April	47,723,472	9.62%	1,749,748	60,093,854	12.11%	3,889,308
May	63,592,925	12.74%	2,084,454	58,820,812	11.79%	3,168,607
June	52,090,035	12.20%	1,696,956	31,390,628	7.35%	1,674,175
July	30,306,981	7.65%	1,226,566	10,980,245	2.77%	1,100,032
August	24,785,927	6.03%	1,356,433	18,941,088	4.61%	1,946,537
September	13,245,082	3.34%	978,882	18,723,589	4.73%	1,900,189
October	14,615,380	3.54%	957,410	15,884,210	3.85%	2,502,531
November	18,423,789	4.34%	1,098,384	39,395,695	9.27%	3,481,573
December	19,071,471	4.37%	962,040	30,710,293	7.04%	3,627,986
<b>Total</b>	<b>400,350,172</b>	<b>7.57%</b>	<b>17,747,591</b>	<b>387,898,999</b>	<b>7.33%</b>	<b>35,003,856</b>

**TOTAL PRODUCER RECEIPTS**

2014	PRODUCT POUNDS	%	BUTTERFAT POUNDS
January	467,170,205	100.00%	17,691,438
February	429,113,061	100.00%	16,127,477
March	493,164,527	100.00%	18,102,050
April	496,180,319	100.00%	17,777,423
May	499,064,865	100.00%	17,675,523
June	426,978,051	100.00%	14,975,464
July	396,387,708	100.00%	14,026,903
August	410,738,498	100.00%	14,641,833
September	396,098,997	100.00%	14,275,135
October	413,030,965	100.00%	15,320,722
November	424,859,531	100.00%	16,193,765
December	436,182,278	100.00%	16,507,985
<b>Total</b>	<b>5,288,969,005</b>	<b>100.00%</b>	<b>193,315,718</b>

**Monthly Producer Receipts**  
Millions



**SOUTHEAST MARKETING AREA  
FEDERAL ORDER NO. 7**

**RECEIPTS AND CLASSIFICATION OF OTHER SOURCE MILK,  
OVERAGES, AND OPENING INVENTORIES**

<b>2014</b>	<b><u>OTHER SOURCE MILK</u></b>	<b><u>OVERAGES</u></b>	<b><u>OPENING INVENTORIES</u></b>	<b><u>TOTAL</u></b>
January	18,652,506	0	40,709,405	59,361,911
February	15,805,890	2,578	34,310,910	50,119,378
March	11,544,819	285,789	35,175,399	47,006,007
April	11,638,948	28,041	43,656,389	55,323,378
May	12,911,500	114,118	42,646,279	55,671,897
June	24,465,498	6,258	36,793,189	61,264,945
July	18,011,695	15,039	38,554,062	56,580,796
August	29,389,963	771	36,436,330	65,827,064
September	31,869,939	0	45,341,290	77,211,229
October	29,660,349	94	42,606,867	72,267,310
November	22,797,652	0	38,523,659	61,321,311
December	22,354,634	0	46,361,482	68,716,116
<b>Total</b>	<b>249,103,393</b>	<b>452,688</b>	<b>481,115,261</b>	<b>730,671,342</b>

<b>2014</b>	<b><u>CLASS I</u></b>	<b><u>CLASS II</u></b>	<b><u>CLASS III</u></b>	<b><u>CLASS IV</u></b>
January	30,350,063	3,612,911	4,115,440	21,283,497
February	30,526,376	2,677,097	766,382	16,149,523
March	30,016,820	2,907,805	0	14,081,382
April	24,758,414	2,961,108	92,819	27,511,037
May	25,802,640	5,412,859	4,802,830	19,653,568
June	23,324,041	6,182,102	12,646,339	19,112,463
July	22,723,732	10,895,994	7,812,435	15,148,635
August	35,976,195	9,050,769	3,106,787	17,693,313
September	36,977,329	12,107,008	539,199	27,587,693
October	40,066,228	8,172,360	1,045,936	22,982,786
November	37,450,487	3,928,143	28,311	19,914,370
December	29,891,263	5,467,051	1,384,170	31,973,632
<b>Total</b>	<b>367,863,588</b>	<b>73,375,207</b>	<b>36,340,648</b>	<b>253,091,899</b>

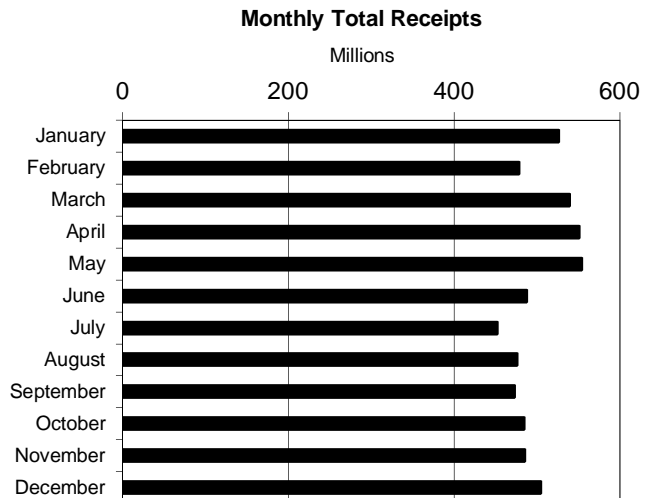
**SOUTHEAST MARKETING AREA  
FEDERAL ORDER NO. 7**

**CLASSIFICATION OF TOTAL RECEIPTS**

2014	CLASS I			CLASS II		
	PRODUCT POUNDS	BUTTERFAT POUNDS	BUTTERFAT TEST	PRODUCT POUNDS	BUTTERFAT POUNDS	BUTTERFAT TEST
January	395,311,511	7,911,372	2.00%	56,177,825	4,367,367	7.77%
February	347,065,851	6,846,707	1.97%	50,386,589	4,289,764	8.51%
March	358,517,815	7,141,311	1.99%	62,625,579	5,811,930	9.28%
April	351,758,971	6,859,012	1.95%	64,323,544	5,751,941	8.94%
May	345,695,182	6,956,976	2.01%	62,171,445	6,100,255	9.81%
June	316,407,188	6,817,139	2.15%	56,596,343	5,801,888	10.25%
July	334,795,392	7,221,105	2.16%	53,924,816	5,163,490	9.58%
August	360,500,229	7,137,899	1.98%	51,538,218	5,088,834	9.87%
September	362,237,538	7,031,453	1.94%	50,977,125	5,338,556	10.47%
October	374,684,628	7,403,485	1.98%	56,085,335	5,417,112	9.66%
November	356,628,326	7,417,738	2.08%	51,790,351	5,056,648	9.76%
December	369,231,547	8,012,656	2.17%	52,527,281	4,618,752	8.79%
<b>Total</b>	<b>4,272,834,178</b>	<b>86,756,853</b>	<b>2.03%</b>	<b>669,124,451</b>	<b>62,806,537</b>	<b>9.39%</b>

2014	CLASS III			CLASS IV		
	PRODUCT POUNDS	BUTTERFAT POUNDS	BUTTERFAT TEST	PRODUCT POUNDS	BUTTERFAT POUNDS	BUTTERFAT TEST
January	34,152,541	2,036,554	5.96%	40,890,239	8,181,204	20.01%
February	35,564,790	1,563,678	4.40%	46,215,209	6,870,479	14.87%
March	51,659,601	2,101,427	4.07%	67,367,539	5,156,205	7.65%
April	47,816,291	1,749,748	3.66%	87,604,891	5,824,751	6.65%
May	68,395,755	2,116,569	3.09%	78,474,380	4,310,011	5.49%
June	64,736,374	1,772,366	2.74%	50,503,091	2,638,105	5.22%
July	38,119,416	1,390,185	3.65%	26,128,880	2,034,078	7.78%
August	27,892,714	1,485,941	5.33%	36,634,401	2,966,662	8.10%
September	13,784,281	1,002,032	7.27%	46,311,282	3,329,356	7.19%
October	15,661,316	969,794	6.19%	38,866,996	4,238,201	10.90%
November	18,452,100	1,107,172	6.00%	59,310,065	5,473,661	9.23%
December	20,455,641	962,040	4.70%	62,683,925	6,435,440	10.27%
<b>Total</b>	<b>436,690,820</b>	<b>18,257,506</b>	<b>4.18%</b>	<b>640,990,898</b>	<b>57,458,153</b>	<b>8.96%</b>

2014	TOTAL RECEIPTS		
	PRODUCT POUNDS	BUTTERFAT POUNDS	BUTTERFAT TEST
January	526,532,116	22,496,497	4.27%
February	479,232,439	19,570,628	4.08%
March	540,170,534	20,210,873	3.74%
April	551,503,697	20,185,452	3.66%
May	554,736,762	19,483,811	3.51%
June	488,242,996	17,029,498	3.49%
July	452,968,504	15,808,858	3.49%
August	476,565,562	16,679,336	3.50%
September	473,310,226	16,701,397	3.53%
October	485,298,275	18,028,592	3.71%
November	486,180,842	19,055,219	3.92%
December	504,898,394	20,028,888	3.97%
<b>Total</b>	<b>6,019,640,347</b>	<b>225,279,049</b>	<b>3.74%</b>



**SOUTHEAST MARKETING AREA  
FEDERAL ORDER NO. 7**

**TOTAL CLASS I UTILIZATION BY POOL HANDLERS**

<b>2014</b>	<b>TOTAL CLASS I ROUTE DISPOSITION</b>	<b>TRANSFERRED OR DIVERTED TO NONPOOL PLANTS</b>	<b>ENDING INVENTORY</b>	<b>CLASS I SHRINKAGE</b>
January	359,237,915	8,342,404	25,751,890	1,979,302
February	311,988,999	6,639,343	25,091,649	3,345,860
March	326,980,095	9,702,941	20,148,068	1,686,711
April	320,762,195	7,894,405	21,131,324	1,971,047
May	318,718,570	6,771,856	19,194,697	1,010,059
June	290,215,160	6,594,564	17,683,015	1,914,449
July	301,293,495	7,025,091	24,070,250	2,406,556
August	327,866,983	6,960,136	21,761,840	3,911,270
September	328,566,399	7,732,115	22,742,787	3,196,237
October	339,623,232	7,680,736	25,677,752	1,702,908
November	321,030,614	11,073,517	21,136,252	3,387,943
December	333,481,988	11,921,142	20,589,728	3,238,689
<b>Total</b>	<b>3,879,765,645</b>	<b>98,338,250</b>	<b>264,979,252</b>	<b>29,751,031</b>

**TOTAL CLASS I UTILIZATION**

<b>2014</b>	<b>PRODUCT POUNDS</b>	<b>BUTTERFAT POUNDS</b>	<b>BUTTERFAT TEST</b>	<b>DAILY AVERAGE UTILIZATION</b>
January	395,311,511	7,911,372	2.00%	12,751,984
February	347,065,851	6,846,707	1.97%	12,395,209
March	358,517,815	7,141,311	1.99%	11,565,091
April	351,758,971	6,859,012	1.95%	11,725,299
May	345,695,182	6,956,976	2.01%	11,151,457
June	316,407,188	6,817,139	2.15%	10,546,906
July	334,795,392	7,221,105	2.16%	10,799,851
August	360,500,229	7,137,899	1.98%	11,629,040
September	362,237,538	7,031,453	1.94%	12,074,585
October	374,684,628	7,403,485	1.98%	12,086,601
November	356,628,326	7,417,738	2.08%	11,887,611
December	369,231,547	8,012,656	2.17%	11,910,695
<b>Total</b>	<b>4,272,834,178</b>	<b>86,756,853</b>	<b>2.03%</b>	<b>11,706,395</b>

**Southeast Marketing Area - Federal Order 7**

**CLASS I PACKAGED ROUTE DISPOSITION IN AND OUT OF MARKETING AREA BY POOL PLANTS**

	In Area		Out of Area		Total Pounds
	Pounds	Percent	Pounds	Percent	
<b>2014</b>					
January	323,311,102	90.00%	35,926,813	10.00%	359,237,915
February	281,758,424	90.31%	30,230,575	9.69%	311,988,999
March	294,404,561	90.04%	32,575,534	9.96%	326,980,095
April	289,350,725	90.21%	31,411,470	9.79%	320,762,195
May	287,232,778	90.12%	31,485,792	9.88%	318,718,570
June	260,612,301	89.80%	29,602,859	10.20%	290,215,160
July	270,434,402	89.76%	30,859,093	10.24%	301,293,495
August	295,301,805	90.07%	32,565,178	9.93%	327,866,983
September	295,518,365	89.94%	33,048,034	10.06%	328,566,399
October	305,102,011	89.84%	34,521,221	10.16%	339,623,232
November	287,887,292	89.68%	33,143,322	10.32%	321,030,614
December	298,748,237	89.58%	34,733,751	10.42%	333,481,988
<b>Total</b>	<b><u>3,489,662,003</u></b>	<b><u>89.95%</u></b>	<b><u>390,103,642</u></b>	<b><u>10.05%</u></b>	<b><u>3,879,765,645</u></b>
<b>Average</b>	<b><u>290,805,167</u></b>		<b><u>32,508,637</u></b>		<b><u>323,313,804</u></b>

9

**CLASS I PACKAGED ROUTE DISPOSITION IN MARKETING AREA BY POOL PLANTS AND NONPOOL PLANTS**

	Pool Plants		Nonpool Plants		Total Pounds
	Pounds	Percent	Pounds	Percent	
<b>2014</b>					
January	323,311,102	77.61%	93,258,022	22.39%	416,569,124
February	281,758,424	76.12%	88,415,485	23.88%	370,173,909
March	294,404,561	75.88%	93,606,840	24.12%	388,011,401
April	289,350,725	75.91%	91,818,324	24.09%	381,169,049
May	287,232,778	75.90%	91,206,659	24.10%	378,439,437
June	260,612,301	75.52%	84,465,103	24.48%	345,077,404
July	270,434,402	75.95%	85,657,431	24.05%	356,091,833
August	295,301,805	75.95%	93,513,800	24.05%	388,815,605
September	295,518,365	76.61%	90,229,101	23.39%	385,747,466
October	305,102,011	76.09%	95,893,256	23.91%	400,995,267
November	287,887,292	75.96%	91,118,231	24.04%	379,005,523
December	298,748,237	75.84%	95,196,295	24.16%	393,944,532
<b>Total</b>	<b><u>3,489,662,003</u></b>	<b><u>76.13%</u></b>	<b><u>1,094,378,547</u></b>	<b><u>23.87%</u></b>	<b><u>4,584,040,550</u></b>
<b>Average</b>	<b><u>290,805,167</u></b>		<b><u>91,198,212</u></b>		<b><u>382,003,379</u></b>



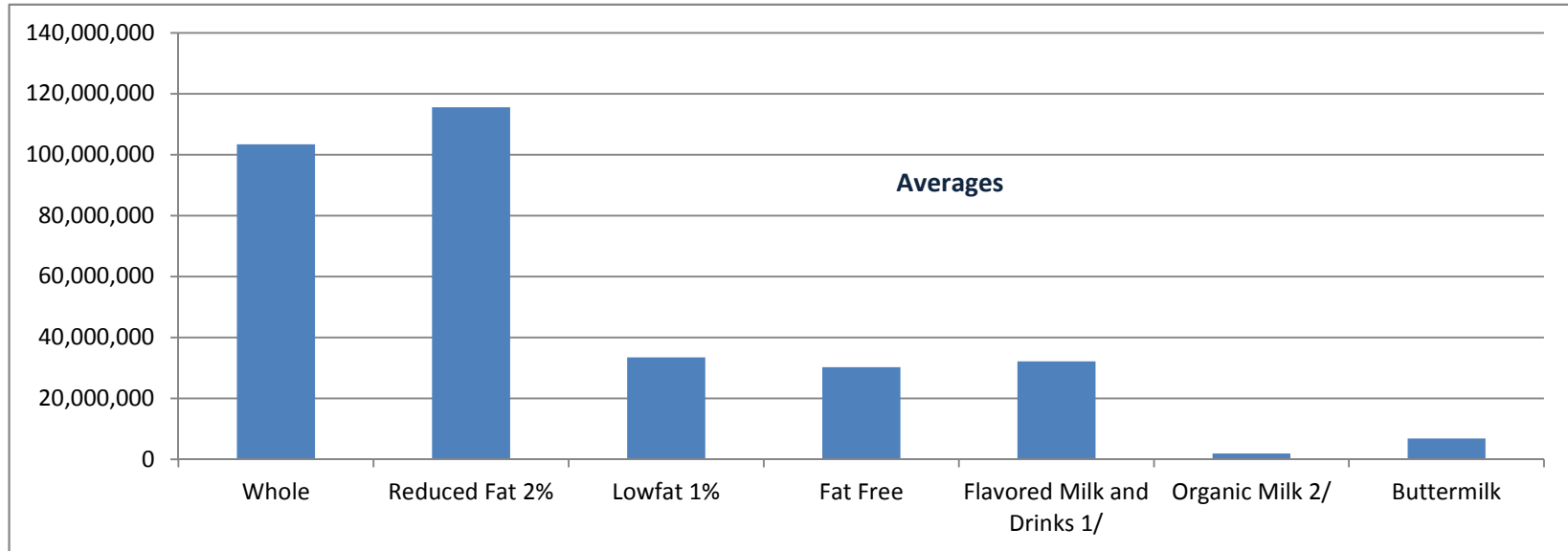
**Southeast Marketing Area - Federal Order 7**

**CLASS I PACKAGED ROUTE DISPOSITION BY PRODUCT**

	<b>Whole</b>	<b>Reduced Fat 2%</b>	<b>Lowfat 1%</b>	<b>Fat Free</b>	<b>Flavored Milk and Drinks 1/</b>	<b>Organic Milk 2/</b>	<b>Buttermilk</b>	<b>Total Packaged Class I</b>
<b>2014</b>								
January	113,083,613	128,668,929	36,396,904	35,085,696	37,760,395	1,851,868	6,390,510	359,237,915
February	97,416,799	109,751,511	32,087,404	30,433,493	34,168,837	1,698,806	6,432,149	311,988,999
March	101,971,442	115,980,438	33,649,335	31,980,416	34,819,420	1,934,973	6,644,071	326,980,095
April	98,452,233	111,569,738	34,235,087	30,365,527	37,609,143	1,919,041	6,611,426	320,762,195
May	101,952,108	116,821,952	32,221,783	30,494,862	28,929,436	1,979,814	6,318,615	318,718,570
June	101,124,305	114,097,854	25,570,127	28,028,592	13,251,899	1,919,671	6,222,712	290,215,160
July	106,281,703	119,397,798	25,665,483	28,656,793	12,844,235	1,728,813	6,718,670	301,293,495
August	103,427,749	118,490,797	33,429,264	30,279,933	33,617,807	2,130,597	6,490,836	327,866,983
September	100,397,506	113,536,389	35,840,995	29,566,124	40,961,928	1,792,623	6,470,834	328,566,399
October	104,403,870	115,562,644	38,663,799	30,431,708	41,788,167	1,664,947	7,108,097	339,623,232
November	101,663,524	108,899,929	36,157,471	28,818,897	35,274,990	1,621,422	8,594,381	321,030,614
December	110,425,443	114,129,684	36,733,032	28,602,361	33,888,726	1,713,583	7,989,159	333,481,988
<b>Total</b>	<b>1,240,600,295</b>	<b>1,386,907,663</b>	<b>400,650,684</b>	<b>362,744,402</b>	<b>384,914,983</b>	<b>21,956,158</b>	<b>81,991,460</b>	<b>3,879,765,645</b>
<b>Average</b>	<b>103,383,358</b>	<b>115,575,639</b>	<b>33,387,557</b>	<b>30,228,700</b>	<b>32,076,249</b>	<b>1,829,680</b>	<b>6,832,622</b>	<b>323,313,804</b>

1 / Includes Eggnog

2 / Includes Whole, Reduced Fat, Low Fat, and Flavored Organic milk products.



**SOUTHEAST MARKETING AREA  
FEDERAL ORDER NO. 7**

**TOTAL CLASS II UTILIZATION BY POOL HANDLERS**

<b>2014</b>	<b><u>NONFLUID USED TO PRODUCE</u></b>	<b><u>SHRINKAGE 1/</u></b>	<b><u>TRANSFERRED OR DIVERTED TO NONPOOL PLANTS</u></b>	<b><u>USED TO PRODUCE 2/ &amp; OTHER USES 3/</u></b>
January	2,257,961	885	41,295,263	12,623,716
February	2,289,600	5,883	36,268,908	11,822,198
March	2,506,146	1,714	45,567,056	14,550,663
April	2,560,336	0	47,055,685	14,707,523
May	2,627,216	153,073	41,818,450	17,572,706
June	2,828,885	60,720	36,844,565	16,862,173
July	2,898,266	78,247	36,848,018	14,100,285
August	2,610,464	15,203	33,807,103	15,105,448
September	2,654,933	3,015	35,798,275	12,520,902
October	2,730,613	0	41,313,864	12,040,858
November	2,273,817	22,942	37,117,941	12,375,651
December	2,009,840	24,293	37,872,341	12,620,807
<b>Total</b>	<b>30,248,077</b>	<b>365,975</b>	<b>471,607,469</b>	<b>166,902,930</b>

**TOTAL CLASS II UTILIZATION**

<b>2014</b>	<b><u>PRODUCT POUNDS</u></b>	<b><u>BUTTERFAT POUNDS</u></b>	<b><u>BUTTERFAT TEST</u></b>	<b><u>DAILY UTILIZATION</u></b>
January	56,177,825	4,367,367	7.77%	1,812,188
February	50,386,589	4,289,764	8.51%	1,799,521
March	62,625,579	5,811,930	9.28%	2,020,180
April	64,323,544	5,751,941	8.94%	2,144,118
May	62,171,445	6,100,255	9.81%	2,005,530
June	56,596,343	5,801,888	10.25%	1,886,545
July	53,924,816	5,163,490	9.58%	1,739,510
August	51,538,218	5,088,834	9.87%	1,662,523
September	50,977,125	5,338,556	10.47%	1,699,238
October	56,085,335	5,417,112	9.66%	1,809,204
November	51,790,351	5,056,648	9.76%	1,726,345
December	52,527,281	4,618,752	8.79%	1,694,428
<b>Total</b>	<b>669,124,451</b>	<b>62,806,537</b>	<b>9.39%</b>	<b>1,833,218</b>

- 1/ Pursuant § 1000.43 (b) (1). Assigned to lowest priced class.
- 2/ Pursuant § 1000.40 (b). Used to Produce assigned to Class II.
- 3/ Pursuant § 1000.40 (e). Other Uses assigned to lowest priced class.

**SOUTHEAST MARKETING AREA  
FEDERAL ORDER NO. 7**

**TOTAL CLASS III UTILIZATION BY POOL HANDLERS**

<b>2014</b>	<b><u>SHRINKAGE 1/</u></b>	<b><u>TRANSFERRED OR DIVERTED TO NONPOOL PLANTS &amp; USED TO PRODUCE</u></b>	<b><u>USED TO PRODUCE &amp; OTHER USES 2/ 3/</u></b>
January	5,843,894	24,581,985	3,726,662
February	5,987,258	26,441,034	3,136,498
March	5,089,874	43,028,148	3,541,579
April	0	47,816,291	0
May	5,673,729	58,390,244	4,331,782
June	5,496,089	55,652,359	3,587,926
July	5,085,088	29,346,211	3,688,117
August	6,347,590	17,811,658	3,733,466
September	0	13,784,281	0
October	0	15,661,316	0
November	0	18,452,100	0
December	0	20,455,641	0
<b>Total</b>	<b>39,523,522</b>	<b>371,421,268</b>	<b>25,746,030</b>

**TOTAL CLASS III UTILIZATION**

<b>2014</b>	<b><u>PRODUCT POUNDS</u></b>	<b><u>BUTTERFAT POUNDS</u></b>	<b><u>BUTTERFAT TEST</u></b>	<b><u>DAILY AVERAGE UTILIZATION</u></b>
January	34,152,541	2,036,554	5.96%	1,101,695
February	35,564,790	1,563,678	4.40%	1,270,171
March	51,659,601	2,101,427	4.07%	1,666,439
April	47,816,291	1,749,748	3.66%	1,593,876
May	68,395,755	2,116,569	3.09%	2,206,315
June	64,736,374	1,772,366	2.74%	2,157,879
July	38,119,416	1,390,185	3.65%	1,229,659
August	27,892,714	1,485,941	5.33%	899,765
September	13,784,281	1,002,032	7.27%	459,476
October	15,661,316	969,794	6.19%	505,204
November	18,452,100	1,107,172	6.00%	615,070
December	20,455,641	962,040	4.70%	659,859
<b>Total</b>	<b>436,690,820</b>	<b>18,257,506</b>	<b>4.18%</b>	<b>1,196,413</b>

- 1/** Pursuant § 1000.43 (b) (1). Assigned to lowest priced class.
- 2/** Pursuant § 1000.40 (c). Used to Produce assigned to Class III.
- 3/** Pursuant § 1000.40 (e). Other Uses assigned to lowest priced class.

**SOUTHEAST MARKETING AREA  
FEDERAL ORDER NO. 7**

**TOTAL CLASS IV UTILIZATION BY POOL HANDLERS**

<b>2014</b>	<b>ENDING INVENTORY</b>	<b>NONFLUID USED TO FORTIFY</b>	<b>SHRINKAGE 1/</b>	<b>TRANSFERRED OR DIVERTED TO NONPOOL PLANTS</b>	<b>USED TO PRODUCE/ 2/ OTHER USES 3/</b>
January	8,559,020	775,980	57,022	31,498,217	0
February	9,997,843	672,328	-48,757	35,593,795	0
March	21,396,573	705,259	0	45,265,707	0
April	21,469,698	709,033	5,784,153	55,926,768	3,715,239
May	17,598,492	707,913	0	60,167,975	0
June	20,843,942	679,980	0	28,979,169	0
July	12,290,542	722,722	0	13,114,751	865
August	23,655,660	703,441	1,085	12,274,215	0
September	19,857,771	737,871	5,864,629	15,665,363	4,185,648
October	12,731,460	1,077,135	5,807,284	15,554,472	3,696,645
November	25,225,230	2,216,438	6,178,464	22,192,465	3,497,468
December	17,936,330	2,281,565	5,896,745	31,790,925	4,778,360
<b>Total</b>	<b>211,562,561</b>	<b>11,989,665</b>	<b>29,540,625</b>	<b>368,023,822</b>	<b>19,874,225</b>

**TOTAL CLASS IV UTILIZATION**

<b>2014</b>	<b>PRODUCT POUNDS</b>	<b>BUTTERFAT POUNDS</b>	<b>BUTTERFAT TEST</b>	<b>DAILY UTILIZATION</b>
January	40,890,239	8,181,204	20.01%	1,319,040
February	46,215,209	6,870,479	14.87%	1,650,543
March	67,367,539	5,156,205	7.65%	2,173,146
April	87,604,891	5,824,751	6.65%	2,920,163
May	78,474,380	4,310,011	5.49%	2,531,432
June	50,503,091	2,638,105	5.22%	1,683,436
July	26,128,880	2,034,078	7.78%	842,867
August	36,634,401	2,966,662	8.10%	1,181,755
September	46,311,282	3,329,356	7.19%	1,543,709
October	38,866,996	4,238,201	10.90%	1,253,774
November	59,310,065	5,473,661	9.23%	1,977,002
December	62,683,925	6,435,440	10.27%	2,022,062
<b>Total</b>	<b>640,990,898</b>	<b>57,458,153</b>	<b>8.96%</b>	<b>1,756,139</b>

**1/** Pursuant § 1000.43 (b) (1). Assigned to lowest priced class.

**2/** Pursuant § 1000.40 (d). Used to Produce assigned to Class IV.

**3/** Pursuant § 1000.40 (e). Other Uses assigned to lowest priced class.

**SOUTHEAST MARKETING AREA  
FEDERAL ORDER NO. 7  
ANNOUNCED FEDERAL ORDER CLASS & UNIFORM PRICES**

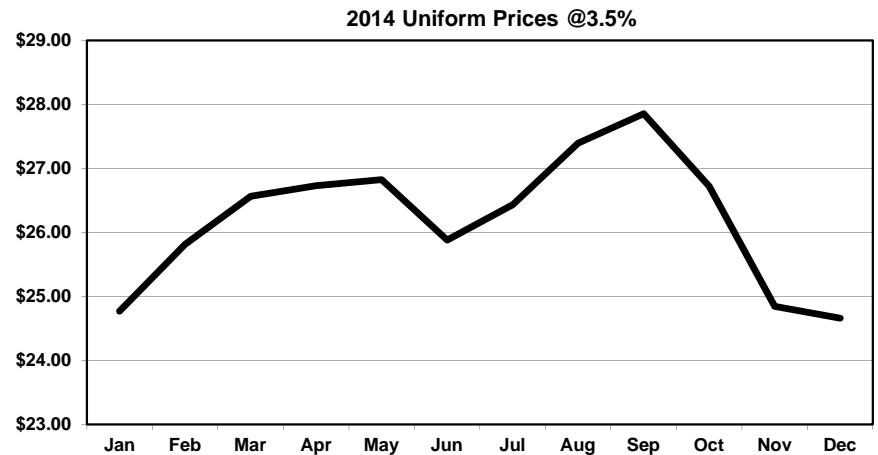
<b>CLASS I*</b>			
<b>2014</b>	<b>Skim</b>	<b>Butterfat</b>	<b>Milk @ 3.5%</b>
January	\$19.61	\$1.8171	\$25.28
February	\$20.37	\$1.7605	\$25.82
March	\$20.94	\$2.0678	\$27.44
April	\$21.02	\$2.0474	\$27.45
May	\$21.25	\$2.2170	\$28.27
June	\$19.38	\$2.2736	\$26.66
July	\$18.81	\$2.4757	\$26.82
August	\$19.02	\$2.6615	\$27.67
September	\$18.36	\$2.7753	\$27.43
October	\$17.47	\$3.1790	\$27.99
November	\$17.05	\$3.2596	\$27.86
December	\$19.19	\$2.2315	\$26.33
<b>Average</b>	<b>\$19.37</b>	<b>\$2.3972</b>	<b>\$27.08</b>

<b>CLASS II</b>			
<b>2014</b>	<b>Skim</b>	<b>Butterfat</b>	<b>Milk @ 3.5%</b>
January	\$16.51	\$1.7944	\$22.21
February	\$17.27	\$2.0179	\$23.73
March	\$17.67	\$2.0472	\$24.22
April	\$17.92	\$2.1277	\$24.74
May	\$17.06	\$2.2791	\$24.44
June	\$15.93	\$2.4483	\$23.94
July	\$15.71	\$2.6419	\$24.41
August	\$15.92	\$2.8518	\$25.34
September	\$15.26	\$3.2537	\$26.11
October	\$12.36	\$2.8577	\$21.93
November	\$12.62	\$2.2081	\$19.91
December	\$12.14	\$2.1061	\$19.09
<b>Average</b>	<b>\$15.53</b>	<b>\$2.3862</b>	<b>\$23.34</b>

<b>CLASS III</b>			
<b>2014</b>	<b>Skim</b>	<b>Butterfat</b>	<b>Milk @ 3.5%</b>
January	\$15.43	\$1.7874	\$21.15
February	\$16.90	\$2.0109	\$23.35
March	\$16.78	\$2.0402	\$23.33
April	\$17.50	\$2.1207	\$24.31
May	\$15.15	\$2.2721	\$22.57
June	\$13.28	\$2.4413	\$21.36
July	\$12.83	\$2.6349	\$21.60
August	\$12.74	\$2.8448	\$22.25
September	\$13.72	\$3.2467	\$24.60
October	\$14.34	\$2.8507	\$23.82
November	\$14.75	\$2.2011	\$21.94
December	\$10.85	\$2.0991	\$17.82
<b>Average</b>	<b>\$14.52</b>	<b>\$2.3792</b>	<b>\$22.34</b>

<b>CLASS IV</b>			
<b>2014</b>	<b>Skim</b>	<b>Butterfat</b>	<b>Milk @ 3.5%</b>
January	\$16.62	\$1.7874	\$22.29
February	\$17.02	\$2.0109	\$23.46
March	\$17.12	\$2.0402	\$23.66
April	\$16.50	\$2.1207	\$23.34
May	\$15.23	\$2.2721	\$22.65
June	\$15.11	\$2.4413	\$23.13
July	\$15.09	\$2.6349	\$23.78
August	\$14.44	\$2.8448	\$23.89
September	\$11.62	\$3.2467	\$22.58
October	\$11.78	\$2.8507	\$21.35
November	\$10.89	\$2.2011	\$18.21
December	\$9.69	\$2.0991	\$16.70
<b>Average</b>	<b>\$14.26</b>	<b>\$2.3792</b>	<b>\$22.09</b>

<b>UNIFORM*</b>			
<b>2014</b>	<b>Skim</b>	<b>Butterfat</b>	<b>Milk @ 3.5%</b>
January	\$19.14	\$1.7993	\$24.77
February	\$19.81	\$1.9134	\$25.81
March	\$20.09	\$2.0505	\$26.56
April	\$20.10	\$2.0948	\$26.73
May	\$19.63	\$2.2525	\$26.83
June	\$18.22	\$2.3707	\$25.88
July	\$18.11	\$2.5583	\$26.43
August	\$18.36	\$2.7646	\$27.39
September	\$17.85	\$3.0373	\$27.86
October	\$16.84	\$2.9927	\$26.73
November	\$16.20	\$2.6323	\$24.85
December	\$17.73	\$2.1578	\$24.66
<b>Average</b>	<b>\$18.51</b>	<b>\$2.3854</b>	<b>\$26.20</b>



\* Class 1 and Uniform Prices are at Fulton County (Atlanta), Georgia

**SOUTHEAST MARKETING AREA  
FEDERAL ORDER NO. 7**

Agricultural Marketing Service Class and Component Prices

**Dairy Products Price Averages Used in Federal Milk Order Price Formulas, 2014**

Month	Product Price Averages For:							
	Class I (Skim, Bfat.), Class II (Skim, Nonfat Solids)				Class II (Bfat.), Class III, Class IV, Components			
	Butter	Nonfat Dry Milk	Cheese	Dry Whey	Butter	Nonfat Dry Milk	Cheese	Dry Whey
	Dollars per pound				Dollars per pound			
Jan	1.6406	1.9423	1.8583	0.5669	1.6475	2.0335	2.0838	0.6025
Feb	1.5939	2.0270	2.0308	0.5939	1.8320	2.0783	2.2864	0.6314
Mar	1.8476	2.0718	2.3213	0.6238	1.8562	2.0897	2.2689	0.6554
Apr	1.8308	2.1007	2.2211	0.6495	1.9227	2.0191	2.3547	0.6774
May	1.9708	2.0040	2.3695	0.6751	2.0477	1.8768	2.1703	0.6745
Jun	2.0176	1.8768	2.2029	0.6724	2.1874	1.8633	2.0358	0.6789
Jul	2.1845	1.8526	2.0334	0.6767	2.3473	1.8617	2.0482	0.6890
Aug	2.3379	1.8763	2.0445	0.6873	2.5206	1.7887	2.1074	0.6880
Sep	2.4319	1.8020	2.0666	0.6926	2.8525	1.4718	2.3472	0.6725
Oct	2.7652	1.4766	2.3062	0.6747	2.5255	1.4900	2.2914	0.6525
Nov	2.8318	1.5052	2.3001	0.6590	1.9891	1.3902	2.1305	0.6365
Dec	1.9828	1.4517	2.1872	0.6441	1.9049	1.2554	1.7362	0.5871
<b>Avg</b>	<b>2.1196</b>	<b>1.8322</b>	<b>2.1618</b>	<b>0.6513</b>	<b>2.1361</b>	<b>1.7682</b>	<b>2.1551</b>	<b>0.6538</b>

**Public Producer Milk By County/State  
(More Than Two Producer Per County)**

**Federal Order No. 7**

**May 2014**

**Alabama**  
Restricted

Troup	285	3	150,235
Wilkes	317	3	237,951
Restricted	999	67	38,094,036
<b>Total for Georgia</b>		<u>205</u>	<u>101,961,058</u>

**Arkansas**  
Restricted

<b>County Name</b>	<b>Code</b>	<b>No. Farms</b>	<b>Total Pounds</b>
Monroe	133	3	498,529
Randolph	157	4	2,346,306
St. clair	163	5	1,224,571
Washington	189	16	5,458,992
Restricted	999	10	2,495,120
<b>Total for Illinois</b>		<u>38</u>	<u>12,023,518</u>

**Florida**

<b>County Name</b>	<b>Code</b>	<b>No. Farms</b>	<b>Total Pounds</b>
Gilchrist	41	3	7,432,387
Jackson	63	3	717,851
Jefferson	65	3	7,391,945
Lafayette	67	3	776,720
Levy	75	3	4,560,654
Madison	79	3	6,414,937
Suwannee	121	3	92,680
Washington	133	4	406,973
Restricted	999	10	3,088,072
<b>Total for Florida</b>		<u>35</u>	<u>30,882,219</u>

**Indiana**

<b>County Name</b>	<b>Code</b>	<b>No. Farms</b>	<b>Total Pounds</b>
Dubois	37	4	3,306,367
Gibson	51	8	1,989,110
Jasper	73	4	7,017,113
La porte	91	6	1,250,998
Newton	111	6	13,353,108
Posey	129	5	753,406
Vanderburgh	163	3	954,132
Restricted	999	12	9,736,541
<b>Total for Indiana</b>		<u>48</u>	<u>38,360,775</u>

**Georgia**

<b>County Name</b>	<b>Code</b>	<b>No. Farms</b>	<b>Total Pounds</b>
Appling	1	3	440,590
Brooks	27	4	6,395,781
Burke	33	6	4,091,252
Greene	133	13	4,656,868
Hall	139	5	418,050
Hart	147	3	695,248
Houston	153	3	506,379
Jasper	159	3	838,437
Jefferson	163	6	590,098
Jenkins	165	3	69,767
Laurens	175	3	219,757
Macon	193	33	28,697,965
Morgan	211	13	4,672,020
Putnam	237	26	8,859,406
Taliaferro	265	5	1,064,512
Tift	277	3	1,262,706

**Kansas**

<b>County Name</b>	<b>Code</b>	<b>No. Farms</b>	<b>Total Pounds</b>
Douglas	45	4	294,272
Franklin	59	4	370,163
Hamilton	75	7	9,782,905
Kearny	93	4	3,699,433
Labette	99	6	177,522
Marion	115	3	272,215
Miami	121	3	154,493
Reno	155	8	214,351
Restricted	999	20	11,397,850
<b>Total for Kansas</b>		<u>59</u>	<u>26,363,204</u>

**Public Producer Milk By County/State  
(More Than Two Producer Per County)**

**Federal Order No. 7**

**May 2014**

**Kentucky**

County Name	Code	No. Farms	Total Pounds
Adair	1	20	3,912,954
Allen	3	4	470,558
Barren	9	27	4,710,653
Breckinridge	27	3	233,110
Christian	47	79	4,213,196
Grayson	85	5	244,834
Green	87	14	1,265,298
Hardin	93	6	941,349
Hart	99	11	451,174
Logan	141	9	9,195,916
Metcalfe	169	18	1,068,919
Monroe	171	16	1,173,372
Taylor	217	13	2,052,167
Todd	219	45	3,769,938
Trigg	221	21	484,782
Warren	227	12	4,468,730
Restricted	999	22	2,628,670
<b>Total for Kentucky</b>		<b>325</b>	<b>41,285,620</b>

**Louisiana**

County Name	Code	No. Farms	Total Pounds
De Soto	31	4	953,630
Sabine	85	3	896,093
St. helena	91	9	2,035,042
Tangipahoa	105	60	8,487,807
Washington	117	33	5,192,009
Restricted	999	15	1,758,506
<b>Total for Louisiana</b>		<b>124</b>	<b>19,323,087</b>

**Mississippi**

County Name	Code	No. Farms	Total Pounds
Amite	5	4	817,275
Jones	67	3	512,573
Lincoln	85	9	1,450,006
Marion	91	11	1,962,335
Marshall	93	3	453,614
Newton	101	3	661,459
Noxubee	103	3	331,311

Pike	113	8	1,352,888
Tate	137	3	2,093,166
Walthall	147	11	1,533,691
Restricted	999	27	6,128,940
<b>Total for Mississippi</b>		<b>85</b>	<b>17,297,258</b>

**Missouri**

County Name	Code	No. Farms	Total Pounds
Barry	9	19	2,458,282
Bates	13	6	380,464
Benton	15	5	327,210
Cape girardeau	31	8	1,921,452
Cass	37	3	440,916
Cedar	39	3	295,285
Christian	43	17	1,650,358
Dade	57	4	621,326
Dallas	59	31	3,469,856
Douglas	67	38	3,606,015
Greene	77	14	1,991,088
Henry	83	3	429,338
Hickory	85	4	677,950
Howell	91	18	1,205,047
Jasper	97	10	1,833,560
Jefferson	99	3	320,018
Laclede	105	38	3,664,397
Lawrence	109	42	12,022,782
Mcdonald	119	4	931,586
Newton	145	14	2,322,437
Oregon	149	6	338,754
Ozark	153	12	1,101,923
Perry	157	5	671,230
Polk	167	29	5,976,413
Stone	209	18	1,677,852
Taney	213	3	201,182
Texas	215	37	3,393,743
Vernon	217	4	4,149,926
Webster	225	54	5,440,592
Wright	229	84	9,376,859
Restricted	999	18	5,849,413
<b>Total for Missouri</b>		<b>554</b>	<b>78,747,254</b>



**Public Producer Milk By County/State  
(More Than Two Producer Per County)**

**Federal Order No. 7**

**May 2014**

**New Mexico**

**Restricted**

Restricted	999	5	595,572
<b>Total for Oklahoma</b>		<u>67</u>	<u>10,766,900</u>

**Pennsylvania**

**Restricted**

**North Carolina**

**Restricted**

**South Carolina**

**County Name**

**Code**

**No.  
Farms**

**Total Pounds**

Restricted	999	13	2,391,187
<b>Total for South Carolina</b>		<u>13</u>	<u>2,391,187</u>

**Ohio**

**County Name**

**Code**

**No.  
Farms**

**Total Pounds**

Adams	1	4	7,759
Ashland	5	3	72,022
Ashtabula	7	3	14,791
Coshocton	31	6	123,052
Fairfield	45	3	30,209
Geauga	55	6	18,212
Highland	71	11	53,113
Holmes	75	42	525,970
Knox	83	4	48,668
Logan	91	8	341,194
Richland	139	11	195,830
Stark	151	6	153,542
Tuscarawas	157	33	953,246
Wayne	169	24	310,648
Restricted	999	19	7,549,920
<b>Total for Ohio</b>		<u>183</u>	<u>10,398,176</u>

**Tennessee**

**County Name**

**Code**

**No.  
Farms**

**Total Pounds**

Bedford	3	6	1,630,291
Cannon	15	4	195,548
Coffee	31	4	833,729
Cumberland	35	4	340,596
Fentress	49	4	192,139
Franklin	51	5	478,141
Gibson	53	3	601,935
Giles	55	4	619,067
Greene	59	6	192,432
Lawrence	99	8	1,413,118
Lincoln	103	4	443,879
Loudon	105	6	499,438
Marshall	117	21	3,347,864
Maury	119	9	2,584,270
Monroe	123	6	313,648
Overton	133	8	210,810
Putnam	141	5	853,212
Robertson	147	7	1,857,364
Rutherford	149	6	379,292
Sumner	165	7	1,263,241
Warren	177	10	1,184,453
White	185	7	1,841,824
Williamson	187	5	854,104

**Oklahoma**

**County Name**

**Code**

**No.  
Farms**

**Total Pounds**

Adair	1	14	2,186,413
Bryan	13	4	1,731,425
Cherokee	21	4	998,372
Coal	29	5	212,514
Craig	35	4	282,196
Delaware	41	8	1,420,028
Mayes	97	19	3,004,556
Rogers	131	4	335,824

**Public Producer Milk By County/State  
(More Than Two Producer Per County)**

**Federal Order No. 7**

**May 2014**

				<b>No. Farms</b>	<b>Total Pounds</b>
Restricted	999	34	3,237,426		
<b>Total for Tennessee</b>		<u>183</u>	<u>25,367,821</u>		
				<b>Unrestricted States Total</b>	<b><u>2,045</u></b>
				<b>Restricted State Total</b>	<b><u>136</u></b>
				<b>Order 7 Total</b>	<b><u>2,181</u></b>
					<b><u>459,493,385</u></b>
					<b><u>39,571,480</u></b>
					<b><u>499,064,865</u></b>

**Texas**

<b>County Name</b>	<b>Code</b>	<b>No. Farms</b>	<b>Total Pounds</b>
Cherokee	73	5	1,964,464
Franklin	159	9	3,683,871
Hopkins	223	55	19,048,876
Nacogdoches	347	3	901,274
Rains	379	5	537,714
Upshur	459	11	3,197,177
Van zandt	467	7	2,221,374
Wood	499	12	2,041,633
Restricted	999	19	10,728,925
<b>Total for Texas</b>		<u>126</u>	<u>44,325,308</u>

**Virginia**

**Restricted**

**Public Producer Milk By County/State  
(More Than Two Producer Per County)**

**Federal Order No. 7**

**December 2014**

**Alabama**

County Name	Code	No. Farms	Total Pounds
Cullman	43	4	852,472
Restricted	999	33	7,662,730
<b>Total for Alabama</b>		<u>37</u>	<u>8,515,202</u>

**Arkansas**

Restricted

**Florida**

County Name	Code	No. Farms	Total Pounds
Jackson	63	3	256,496
Jefferson	65	3	5,282,124
Washington	133	4	158,188
Restricted	999	11	10,589,257
<b>Total for Florida</b>		<u>21</u>	<u>16,286,065</u>

**Georgia**

County Name	Code	No. Farms	Total Pounds
Brooks	27	3	5,804,571
Burke	33	5	1,768,366
Carroll	45	3	250,937
Greene	133	11	5,299,341
Hall	139	4	249,901
Hart	147	3	601,525
Houston	153	3	564,725
Macon	193	32	19,882,246
Morgan	211	13	3,645,480
Putnam	237	25	7,822,641
Taliaferro	265	4	791,285
Tift	277	3	1,224,447
Restricted	999	69	30,760,639
<b>Total for Georgia</b>		<u>178</u>	<u>78,666,104</u>

**Illinois**

County Name	Code	No. Farms	Total Pounds
Clinton	27	4	938,079

Randolph	157	4	2,829,415
St. clair	163	5	1,327,548
Washington	189	15	6,848,418
Restricted	999	11	2,979,124
<b>Total for Illinois</b>		<u>39</u>	<u>14,922,584</u>

**Indiana**

County Name	Code	No. Farms	Total Pounds
Dubois	37	4	3,368,410
Gibson	51	8	5,038,884
Jasper	73	4	9,368,917
La porte	91	6	1,030,332
Newton	111	6	8,498,495
Posey	129	5	839,459
Vanderburgh	163	3	448,996
Restricted	999	14	7,162,016
<b>Total for Indiana</b>		<u>50</u>	<u>35,755,509</u>

**Kansas**

County Name	Code	No. Farms	Total Pounds
Douglas	45	3	57,464
Gray	69	3	2,558,960
Hamilton	75	6	8,269,935
Kearny	93	4	6,919,700
Labette	99	7	196,722
Neosho	133	5	157,789
Restricted	999	16	16,600,758
<b>Total for Kansas</b>		<u>44</u>	<u>34,761,328</u>

**Kentucky**

County Name	Code	No. Farms	Total Pounds
Adair	1	18	2,884,104
Allen	3	5	489,007
Barren	9	24	7,941,347
Breckinridge	27	3	200,064
Christian	47	57	4,497,270
Green	87	12	1,191,539
Hardin	93	7	784,479
Hart	99	5	461,710
Logan	141	9	9,232,656

**Public Producer Milk By County/State  
(More Than Two Producer Per County)**

**Federal Order No. 7**

**December 2014**

Metcalfe	169	12	1,187,841
Monroe	171	16	1,692,981
Taylor	217	13	1,749,084
Todd	219	30	3,448,348
Trigg	221	5	238,282
Warren	227	9	4,756,531
Restricted	999	22	3,244,126
<b>Total for Kentucky</b>		<u>247</u>	<u>43,999,369</u>

**Louisiana**

County Name	Code	No. Farms	Total Pounds
De Soto	31	4	574,563
Sabine	85	3	393,934
St. helena	91	9	1,712,598
Tangipahoa	105	58	7,318,958
Washington	117	28	5,087,215
Restricted	999	14	1,525,560
<b>Total for Louisiana</b>		<u>116</u>	<u>16,612,828</u>

**Maryland**

**Restricted**

**Mississippi**

County Name	Code	No. Farms	Total Pounds
Amite	5	4	711,717
Jones	67	3	496,567
Lincoln	85	9	1,381,987
Marion	91	10	1,883,334
Marshall	93	3	312,097
Newton	101	3	689,466
Pike	113	6	1,076,071
Tate	137	3	1,993,047
Walthall	147	10	1,305,334
Restricted	999	22	6,363,763
<b>Total for Mississippi</b>		<u>73</u>	<u>16,213,383</u>

**Missouri**

County Name	Code	No. Farms	Total Pounds
Barry	9	19	1,994,729
Bates	13	5	126,760
Benton	15	6	216,151
Cape girardeau	31	7	1,808,028
Cass	37	3	177,172
Cedar	39	4	348,832
Christian	43	17	766,560
Dade	57	3	379,110
Dallas	59	31	3,147,596
Douglas	67	35	2,460,045
Greene	77	15	1,423,778
Henry	83	3	143,167
Hickory	85	4	599,424
Howell	91	19	1,171,771
Jasper	97	9	1,138,505
Laclede	105	38	3,460,082
Lawrence	109	42	5,433,457
Mcdonald	119	3	542,485
Newton	145	16	1,238,556
Oregon	149	7	366,666
Ozark	153	13	1,062,792
Perry	157	4	662,223
Polk	167	31	5,371,673
Stone	209	17	1,533,804
Taney	213	3	66,442
Texas	215	33	3,089,323
Vernon	217	4	1,600,983
Webster	225	53	4,490,184
Wright	229	82	8,235,909
Restricted	999	17	2,609,922
<b>Total for Missouri</b>		<u>543</u>	<u>55,666,129</u>

**New Mexico**

**Restricted**

**Public Producer Milk By County/State  
(More Than Two Producer Per County)**

**Federal Order No. 7**

**December 2014**

**North Carolina**

**Restricted**

Blount	9	4	139,153
Cannon	15	4	174,726
Claiborne	25	3	63,440
Coffee	31	5	731,668
Cumberland	35	3	571,124
Fentress	49	4	270,598
Franklin	51	3	394,183
Gibson	53	3	475,857
Giles	55	4	587,521
Henry	79	3	110,179
Lawrence	99	8	1,136,428
Lincoln	103	5	452,893
Loudon	105	6	434,060
Marshall	117	19	2,714,835
Mauzy	119	8	2,419,896
Monroe	123	7	476,852
Putnam	141	5	856,083
Robertson	147	7	1,622,970
Rutherford	149	5	338,956
Sumner	165	7	1,084,581
Warren	177	13	1,638,953
White	185	7	1,920,370
Williamson	187	5	864,011
Restricted	999	34	3,548,110
<b>Total for Tennessee</b>		<u>179</u>	<u>26,918,929</u>

**Ohio**

County Name	Code	No. Farms	Total Pounds
Adams	1	5	21,676
Ashland	5	3	27,078
Fairfield	45	3	25,397
Geauga	55	6	15,325
Highland	71	9	52,401
Holmes	75	28	170,561
Knox	83	4	13,782
Logan	91	8	191,912
Mercer	107	5	439,852
Richland	139	11	44,482
Stark	151	6	78,633
Tuscarawas	157	20	219,456
Wayne	169	28	160,001
Restricted	999	23	7,584,845
<b>Total for Ohio</b>		<u>159</u>	<u>9,045,401</u>

**Oklahoma**

**Restricted**

**Pennsylvania**

**Restricted**

**South Carolina**

**Restricted**

**Texas**

County Name	Code	No. Farms	Total Pounds
Cherokee	73	4	1,015,447
Franklin	159	11	1,944,865
Hopkins	223	51	9,480,473
Nacogdoches	347	3	569,329
Rains	379	6	368,024
Upshur	459	10	703,787
Van zandt	467	6	467,340
Wood	499	17	752,872
Restricted	999	21	12,933,053
<b>Total for Texas</b>		<u>129</u>	<u>28,235,190</u>

**Tennessee**

County Name	Code	No. Farms	Total Pounds
Bedford	3	7	3,891,482

**Public Producer Milk By County/State  
(More Than Two Producer Per County)**

**Federal Order No. 7**

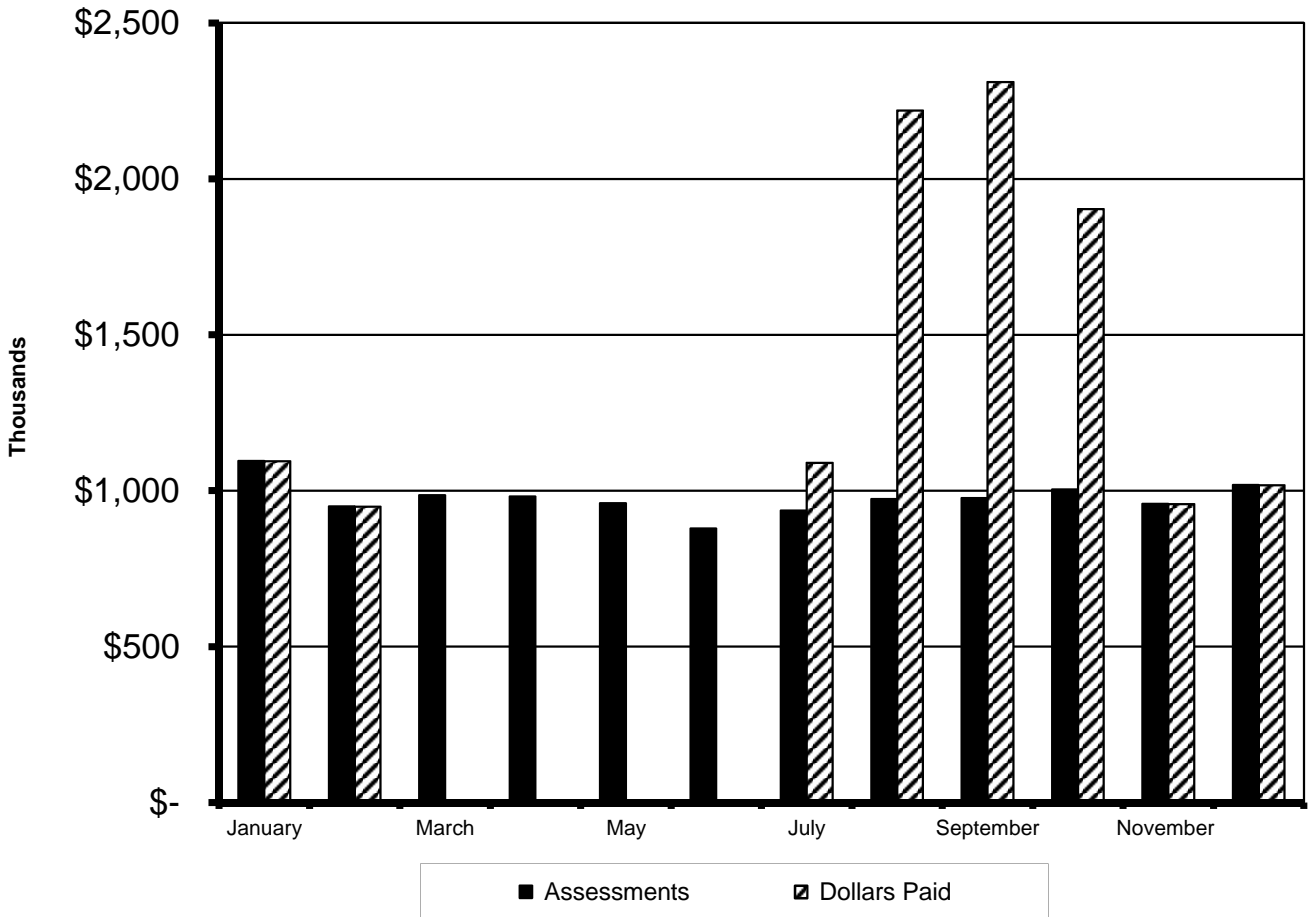
**December 2014**

		<b>No. Farms</b>	<b>Total Pounds</b>
<b>Virginia</b>	<b>Unrestricted States Total</b>	<u>1,815</u>	<u>385,598,021</u>
<b>Restricted</b>	<b>Restricted State Total</b>	<u>176</u>	<u>50,584,257</u>
	<b>Order 7 Total</b>	<u>1,991</u>	<u>436,182,278</u>
<b>Wisconsin</b>			
<b>Restricted</b>			

**SOUTHEAST MARKETING AREA  
FEDERAL ORDER NO. 7  
TRANSPORTATION CREDIT BALANCING FUND**

<b>2014</b>	<b>Assessments</b>	<b>Pounds Claimed</b>	<b>Dollars Claimed</b>	<b>Dollars Paid</b>	<b>Proration</b>
Beginning Balance	\$0.00				
January	\$1,094,884.36	113,987,115	\$1,914,879.05	\$1,095,193.80	57.19%
February	\$949,618.44	85,119,905	\$1,341,063.23	\$949,325.26	70.79%
March	\$985,503.00	N/A	N/A	N/A	N/A
April	\$981,001.69	N/A	N/A	N/A	N/A
May	\$959,677.63	N/A	N/A	N/A	N/A
June	\$879,249.44	N/A	N/A	N/A	N/A
July	\$936,215.00	73,023,213	\$1,089,717.47	\$1,089,717.47	100.00%
August	\$973,572.12	129,642,345	\$2,220,175.61	\$2,220,175.61	100.00%
September	\$975,780.64	107,486,582	\$2,311,489.99	\$2,311,489.99	100.00%
October	\$1,003,855.20	137,362,988	\$2,455,425.27	\$1,903,496.79	77.52%
November	\$957,533.53	117,893,973	\$1,870,785.81	\$957,472.59	51.18%
December	\$1,018,020.89	98,122,625	\$1,452,819.77	\$1,018,020.90	70.07%
<b>TOTAL</b>	<b>\$11,714,911.94</b>	<b>862,638,746</b>	<b>\$14,656,356.20</b>	<b>\$11,544,892.41</b>	<b>78.77%</b>

Difference between **Assessments** and **Dollars Paid** is accounted for by ending balance, accrued interest and audit adjustments.



**SOUTHEAST MARKETING AREA  
FEDERAL ORDER NO. 7  
2014 POOL HANDLERS**

**Fluid Milk Distributing Pool Plants §1007.7(a)(b)(e)**

	J	F	M	A	M	J	J	A	S	O	N	D
Barber Pure Milk Company Birmingham, Alabama	X	X	X	X	X	X	X	X	X	X	X	X
Borden Dairy Company Cowarts, Alabama	X	X	X	X	X	X	X	X	X	X	X	X
Borden Dairy Company Hattiesburg, Mississippi	X	X	X	X	X	X	X	X	X	X	X	X
Borden Dairy Company Lafayette, Louisiana	X	X	X	X	X	X	X	X	X	X	X	X
Brown's Dairy New Orleans, Louisiana	X	X	X	X	X	X	X	X	X	X	X	X
Centennial Farms Dairy Atlanta, Georgia	X	X	X	X	X	X	X	X	X	X	X	X
Country Delite Farms Nashville, Tennessee	X	X	X	X	X	X	X	X	X	X	X	X
Heritage Farms Dairy Murfreesboro, Tennessee	X	X	X	X	X	X	X	X	X	X	X	X
Hiland Dairy Fayetteville, Arkansas	X	X	X	X	X	X	X	X	X	X	X	X
Hiland Dairy Fort Smith, Arkansas	X	X	X	X	X	X	X	X	X	X	X	X
Hiland Dairy Little Rock, Arkansas	X	X	X	X	X	X	X	X	X	X	X	X
Hiland Dairy Springfield, Missouri	X	X	X	X	X	X	X	X	X	X	X	X
Kleinpeter Dairy Farms Baton Rouge, Louisiana	X	X	X	X	X	X	X	X	X	X	X	X
LuVel Dairy Products, Inc. Kosciusko, Mississippi	X	X	X	X	X	X	X	X	X	X	X	X
Mayfield Dairy Farms, Inc. Braselton, Georgia	X	X	X	X	X	X	X	X	X	X	X	X



	J	F	M	A	M	J	J	A	S	O	N	D
Mayfield Ice Cream Birmingham, Alabama					X	X		X			X	X
Memory Lane Dairy Fordland, Missouri	X	X	X	X	X	X	X	X	X	X	X	X
Publix Supermarkets, Inc. Atlanta, Georgia	X	X	X	X	X	X	X	X	X	X	X	X
Purity Dairies, Inc. Nashville, Tennessee	X	X	X	X	X	X	X	X	X	X	X	X
Sparkmans Cream Valley Moultrie, Georgia							X			X	X	X
Sunshine State Dairy Farms, LLC Hammond, Louisiana	X	X	X	X	X	X	X	X	X	X	X	X
Turner Holdings, LLC Fulton, Kentucky	X	X	X	X	X	X	X	X	X	X	X	X
Turner Holdings, LLC Memphis, Tennessee	X	X	X	X	X	X	X	X	X	X	X	X

**Pool Supply Plants §1007.7(c) and/or §1007.7(d)**

Dairy Farmers of America, Inc. Cabool, Missouri	X	X	X	X	X	X	X	X	X	X	X	X
SMI Ultra Filtration Plant Baconton, Georgia				X	X	X	X					

J	F	M	A	M	J	J	A	S	O	N	D
---	---	---	---	---	---	---	---	---	---	---	---

**Cooperatives Qualifying as Pool Handlers §1000.9(c)**

Cobblestone Milk Cooperative Chatham, Virginia	X	X	X	X	X	X	X	X	X	X	X	X
Continental Dairy Artesia, New Mexico	X	X	X	X	X	X	X					
Cooperative MPA Blackstone, Virginia				X	X	X	X				X	
Dairy Farmers of America, Inc. Kansas City, Missouri	X	X	X	X	X	X	X	X	X	X	X	X
Dairy Marketing Services, LLC Syracuse, New York	X	X	X	X	X	X	X	X	X	X	X	X
Dairymens Marketing Cooperative Mountain Grove, Missouri	X	X	X	X	X	X	X	X	X	X	X	X
Foremost Farms USA Baraboo, Wisconsin								X	X			
Lancaster Organic Farmers Coop Bird in Hand, Pennsylvania	X	X	X	X	X	X	X			X	X	
LANCO-Pennland Quality Milk Prods. Hagerstown, Maryland	X	X	X	X	X	X	X	X	X	X	X	X
Lone Star Milk Producers, Inc. Windthorst, Texas	X	X	X	X	X	X	X	X	X	X	X	X
Maryland/Virginia Milk Producers Reston, Virginia	X	X	X	X	X	X	X	X	X	X	X	X
Michigan Milk Producers Novi, Michigan								X	X			
National Farmers Organization Minster, Ohio	X	X	X	X	X	X	X	X	X	X	X	X
Prairie Farms Dairy, Inc. Carlinville, Illinois	X	X	X	X	X	X	X	X	X	X	X	X
Premier Milk, Inc. Ocala, Florida	X	X	X	X	X	X	X	X	X	X	X	X
Select Milk Producers Artesia, New Mexico	X	X	X	X	X	X	X	X	X	X	X	X
Southeast Milk, Inc. Bellevue, Florida	X	X	X	X	X	X	X	X	X	X	X	X

**SOUTHEAST MARKETING AREA  
FEDERAL ORDER NO. 7  
2014 NONPOOL PLANTS WITH ROUTE DISPOSITION IN THE AREA**

**Other Order Plants §1000.8(a)**

	J	F	M	A	M	J	J	A	S	O	N	D
<b>Federal Order # 1</b>												
Farmland Dairies Inc. Wallington, New Jersey	X	X										
H.P. Hood, Inc. Oneida, New York	X	X	X	X	X	X	X	X	X	X	X	X
H.P. Hood, Inc. Winchester, Virginia	X	X	X	X	X	X	X	X	X	X	X	X
Saputo Dairy Foods Delhi, New York	X	X	X	X	X							
Steuben Foods Elma, New York	X	X	X	X	X	X	X	X	X	X	X	X

<b>Federal Order #5</b>												
Borden Dairy Company Charleston, South Carolina	X	X	X	X	X	X	X	X	X	X	X	X
Borden Dairy Company London, Kentucky	X	X	X	X	X	X	X	X	X	X	X	X
Dean Foods Louisville, Kentucky	X	X	X	X	X	X	X	X	X	X	X	X
Homestead Creamery Wirtz, Virginia	X	X	X	X	X	X	X	X	X	X	X	X
Land-O-Sun Spartanburg, South Carolina	X	X	X	X	X	X	X	X	X	X	X	X
Mayfield Dairy Farms, Inc. Athens, Tennessee	X	X	X	X	X	X	X	X	X	X	X	X
Milkco, Inc. Asheville, North Carolina	X	X	X	X	X	X	X	X	X	X	X	X
Prairie Farms Dairy Somerset, Kentucky	X	X	X	X	X	X	X	X	X	X	X	X
Prairie Farms Dairy Holland, Indiana	X	X	X	X	X	X	X	X	X	X	X	X

	J	F	M	A	M	J	J	A	S	O	N	D
Shamrock Foods Company Verona, Virginia											X	X

**Federal Order #6**

Publix Supermarkets, Inc.  
Lakeland, Florida

X	X											
---	---	--	--	--	--	--	--	--	--	--	--	--

Sunshine State Dairy Farms, LLC  
Plant City, Florida

X	X	X	X	X	X	X	X	X	X	X	X	X
---	---	---	---	---	---	---	---	---	---	---	---	---

**Federal Order #30**

Agropur, Inc.  
Maplewood, Minnesota

X	X	X	X	X	X	X	X	X	X	X	X	X
---	---	---	---	---	---	---	---	---	---	---	---	---

Dean Foods  
Woodbury, Minnesota

X	X	X	X	X	X	X	X	X	X	X	X	X
---	---	---	---	---	---	---	---	---	---	---	---	---

Kohler Mix Specialty  
White Bear Lake, Minnesota

X												
---	--	--	--	--	--	--	--	--	--	--	--	--

Saputo Dairy Foods  
White Bear Lake, Minnesota

				X			X		X	X	X	
--	--	--	--	---	--	--	---	--	---	---	---	--

**Federal Order #32**

Aurora Organic Dairy  
Platteville, Colorado

X	X	X	X	X	X	X	X	X	X	X	X	X
---	---	---	---	---	---	---	---	---	---	---	---	---

Borden Dairy, Inc.  
Tulsa, Oklahoma

X	X	X	X	X	X	X	X	X	X	X	X	X
---	---	---	---	---	---	---	---	---	---	---	---	---

Chester Dairy Company  
Chester, Illinois

X	X	X	X	X	X	X	X	X	X	X	X	X
---	---	---	---	---	---	---	---	---	---	---	---	---

Farmers All Natural Creamery  
Wellman, IA

X	X	X	X			X	X	X	X	X	X	X
---	---	---	---	--	--	---	---	---	---	---	---	---

Hiland Dairy  
Chandler, Oklahoma

X	X	X	X	X	X	X	X	X	X	X	X	X
---	---	---	---	---	---	---	---	---	---	---	---	---

Hiland Dairy  
Kansas City, Missouri

			X	X								
--	--	--	---	---	--	--	--	--	--	--	--	--

Jackson Dairy  
Hutchinson, Kansas

X	X	X	X	X	X	X	X	X	X	X	X	X
---	---	---	---	---	---	---	---	---	---	---	---	---

Pet O'Fallon, LLC  
O'Fallon, Illinois

X	X	X	X	X	X	X	X	X	X	X	X	X
---	---	---	---	---	---	---	---	---	---	---	---	---

Prairie Farms Dairy, Inc.  
Carlinville, Illinois

X	X	X	X	X	X	X	X	X	X	X	X	X
---	---	---	---	---	---	---	---	---	---	---	---	---

Prairie Farms Dairy, Inc.  
Granite City, Illinois

X	X	X	X	X	X	X	X				X	
---	---	---	---	---	---	---	---	--	--	--	---	--

	J	F	M	A	M	J	J	A	S	O	N	D
Prairie Farms Dairy, Inc. Hazelwood, Missouri	X	X	X	X	X	X	X	X				
Prairie Farms Dairy, Inc. Olney, Illinois	X	X	X	X	X	X	X	X	X	X	X	X
W.H. Braum, Inc. Tuttle, Oklahoma	X	X	X	X	X	X	X	X	X	X	X	X

**Federal Order #33**

Agropur, Inc. Wyoming, Michigan	X	X	X	X	X	X	X	X	X	X	X	X
Crossroads Farms Indianapolis, Indiana	X	X	X	X	X	X	X	X	X	X	X	X
Marburger Farm Dairy Evans City, Pennsylvania	X	X	X	X	X	X	X	X	X	X	X	X
Nestle USA, Inc. Anderson, Indiana	X	X	X	X	X	X	X	X	X	X	X	X
Superior Dairy, Inc. Canton, Ohio	X	X	X	X	X	X	X	X	X	X	X	X

**Federal Order #126**

BGC Manufacturing Dairy Tyler, Texas					X	X	X	X	X	X	X	X
Borden Dairy Company Dallas, Texas	X	X	X	X	X	X	X	X	X	X	X	X
Oak Farms Dairy-East Dallas, Texas		X	X	X	X	X	X	X	X	X	X	X
Oak Farms Dairy-West Dallas, Texas	X	X	X	X	X	X						
Plains Dairy Products Amarillo Texas	X	X	X	X	X	X	X	X	X	X	X	X
Promised Land Dairy, LLC Floresville, Texas	X	X	X	X	X	X	X	X	X	X	X	X
Saputo Dairy Foods Sulphur Springs, Texas	X	X	X	X	X	X	X	X	X	X	X	X
Southwest Dairy Tyler, Texas	X	X	X	X								
Vandervoort Dairy Fort Worth, Texas	X	X	X	X	X	X	X	X	X	X	X	X
Whitewave Foods Dallas, Texas	X	X	X	X	X	X	X	X	X	X	X	X

J	F	M	A	M	J	J	A	S	O	N	D
---	---	---	---	---	---	---	---	---	---	---	---

**Federal Order #131**

Shamrock Foods Company  
Phoenix, Arizona

X	X	X	X	X	X	X	X	X	X	X	X
---	---	---	---	---	---	---	---	---	---	---	---

**Exempt Distributing Plants \$1000.8(e)**

Alabama's Organic Milk  
Slocomb, Alabama

X	X	X	X	X	X	X	X	X	X	X	X
---	---	---	---	---	---	---	---	---	---	---	---

College of the Ozarks  
Lookout Point, Arkansas

X	X	X	X	X	X	X	X	X	X	X	X
---	---	---	---	---	---	---	---	---	---	---	---

Country Girls' Creamery  
Lumberton, Mississippi

X	X	X	X	X	X	X	X	X	X	X	X
---	---	---	---	---	---	---	---	---	---	---	---

Feliciana's Best Creamery  
Slaughter, Louisiana

X	X	X	X	X	X	X	X	X	X	X	X
---	---	---	---	---	---	---	---	---	---	---	---

Gammon Family Dairy  
Orlina, Tennessee

X	X	X	X	X	X	X	X	X	X	X	X
---	---	---	---	---	---	---	---	---	---	---	---

Hatcher Family Dairy  
College Grove, Tennessee

X	X	X	X	X	X	X	X	X	X	X	X
---	---	---	---	---	---	---	---	---	---	---	---

JD Country Milk  
Russellville, Kentucky

X	X	X	X	X	X	X	X	X	X	X	X
---	---	---	---	---	---	---	---	---	---	---	---

Johnson Family Farm  
Newborn, Georgia

X	X	X	X	X	X	X	X	X	X	X	X
---	---	---	---	---	---	---	---	---	---	---	---

Mauthe's Dairy, LLC  
Folsom, Louisiana

X	X	X	X	X	X	X	X	X	X	X	X
---	---	---	---	---	---	---	---	---	---	---	---

Mauthe Farms, LLC  
McComb, Mississippi

X	X	X	X	X	X	X	X	X	X	X	X
---	---	---	---	---	---	---	---	---	---	---	---

Middle Tennessee State University  
Murfreesboro, Tennessee

X	X	X	X	X	X	X	X	X	X	X	X
---	---	---	---	---	---	---	---	---	---	---	---

Mississippi State University  
Starkville, Mississippi

X	X	X	X	X	X	X	X	X	X	X	X
---	---	---	---	---	---	---	---	---	---	---	---

Mountain Fresh Creamery  
Clermont, Georgia

X	X	X	X	X	X	X	X	X	X	X	X
---	---	---	---	---	---	---	---	---	---	---	---

Ozark Mountain Creamery  
Mountain Grove, Missouri

X	X	X	X	X	X	X	X	X	X	X	X
---	---	---	---	---	---	---	---	---	---	---	---

Rocking R Dairy  
Tylertown, Mississippi

X	X	X	X	X	X	X	X	X	X	X	X
---	---	---	---	---	---	---	---	---	---	---	---

Seven Doves Creamery  
Mena, Arkansas

X	X	X	X	X	X	X	X	X	X	X	X
---	---	---	---	---	---	---	---	---	---	---	---

Southern Swiss Dairy  
Waynesboro, Georgia

X	X	X	X	X	X	X	X	X	X	X	X
---	---	---	---	---	---	---	---	---	---	---	---

	J	F	M	A	M	J	J	A	S	O	N	D
Sparkman's Cream Valley Moultrie, Georgia	X	X	X	X	X	X		X	X			
Wright Dairy, LLC Alexandria, Alabama	X	X	X	X	X	X	X	X	X	X	X	X

**Partially Regulated Distributing Plants §1000.8(c)**

California Natural Products Lathrop, California							X	X	X	X	X	X
Darigold, Inc. Boise, Idaho	X	X	X		X	X		X	X	X	X	
Farmers All Natural Creamery Wellman, IA					X	X						
Gossner Foods, Inc. Logan, Utah	X	X	X	X	X	X	X	X	X	X	X	X
Kohler Mix Specialties, Inc. White Bear Lake, Minnesota		X	X									
Saputo Dairy Foods Murray, Kentucky	X	X	X	X	X	X	X	X	X	X	X	X
Saputo Dairy Foods White Bear Lake, Minnesota				X		X	X		X			
Stremicks Heritage Foods Santa Ana, California	X	X	X	X	X	X	X	X	X	X	X	X
Whitewave Foods City of Industry, California										X		
Whitewave Foods Mount Crawford, Virginia	X	X	X	X	X	X	X	X	X	X	X	X

**Producer-Handler Plants §1000.8(b)**

None