



United States Department of Agriculture

Agricultural Marketing Service - Dairy Programs

**Florida Marketing Area
Federal Order No. 6**

2002 ANNUAL STATISTICS

Sue L. Mosley

Market Administrator

P.O. Box 1208

Norcross, Georgia 30091-1208

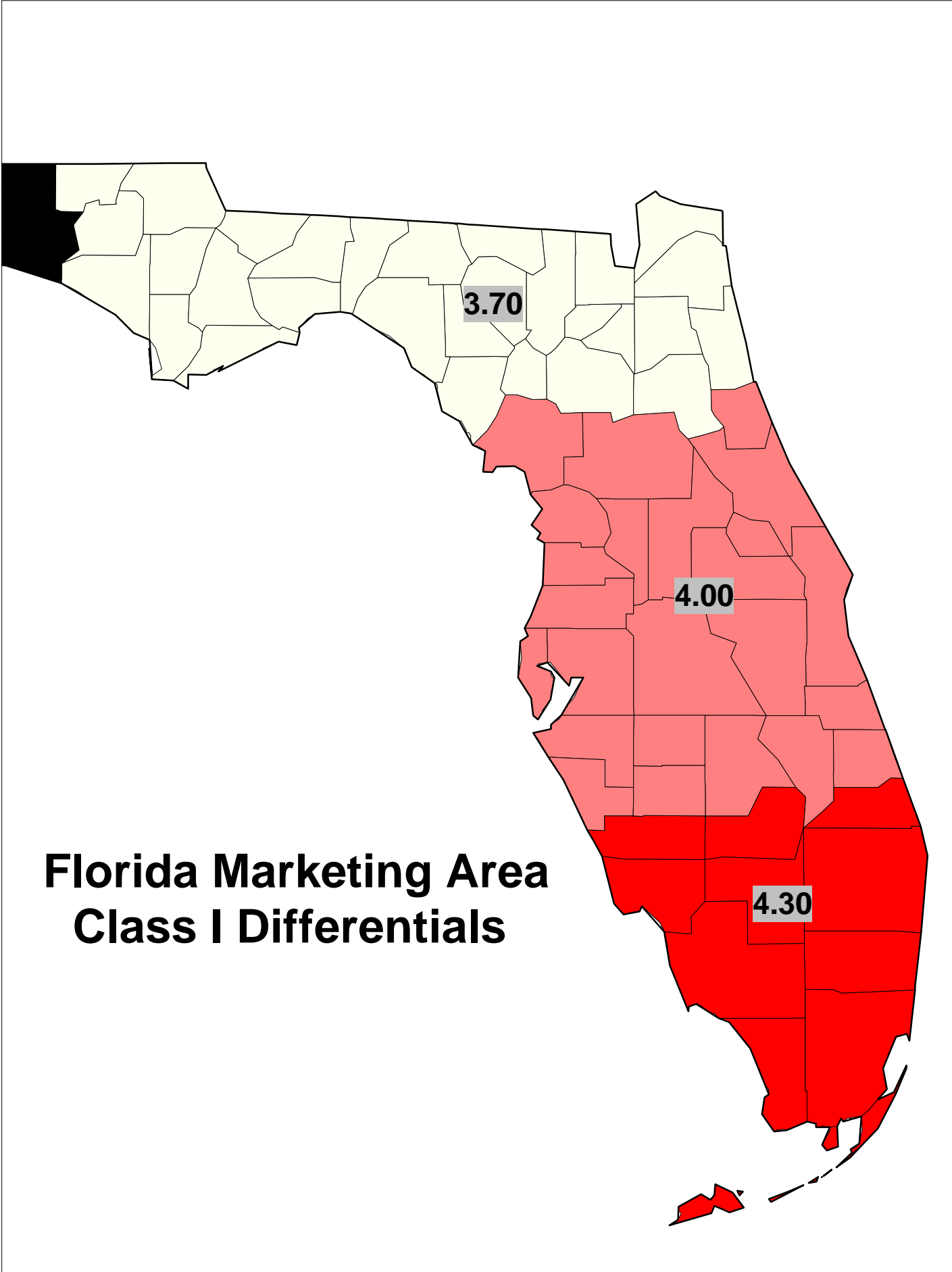
TABLE OF CONTENTS

Florida Marketing Area Map	1
Receipts and Classification of Producer Milk	2
Receipts and Classification of Other Source Milk, Overages, and Opening Inventories	3
Classification of Total Receipts	4
Class I Utilization by Pool Handlers	5
Route Disposition by Pool and Non-Pool Plants	6
Total Class I Route Disposition by Pool Plants	7
Total Class I Route Disposition Inside the Marketing Area	8
Class II Utilization by Pool Handlers	9
Class III Utilization by Pool Handlers	10
Class IV Utilization by Pool Handlers	11
Announced Federal Order Class and Uniform Prices	12
NASS Dairy Product Price Averages Used In Federal Milk Order Price Formulas	13
2002 Pool Handlers	14
2002 Nonpool Handlers with Route Disposition in the Marketing Area	15

The data presented herein represents a compilation of general information pertaining to the marketing of milk in the Florida Marketing Area during 2002. Except for the corrections of mathematical and other obvious errors, the data presented were taken from reports of receipts and utilization, payroll reports, and reports of nonpool handlers that were submitted to the office of the Market Administrator as well as publications released by this office.

This information is prepared pursuant to Section 1000.25 (c)(8) of the General Provisions of Federal Milk Marketing Orders, Part 1000 which is incorporated by reference and made a part of Federal Order Number 6. Part 1000 states that the Market Administrator shall "Prepare and disseminate publicly for the benefit of producers, handlers, and consumers such statistics and other information concerning operation of the order and facts relevant to the provisions thereof (or proposed provisions) as do not reveal confidential information."

The Department of Agriculture (USDA) prohibits discrimination in its programs on the basis of race, color, national origin, gender, religion, age, disability, political beliefs, sexual orientation, and marital or familial status. (Not all prohibited bases apply to all programs.) Persons with disabilities who require alternative means for communication of program information (Braille, large print, audiotape, etc.) should contact USDA's TARGET Center at (202) 720-2600 (voice and TDD). To file a complaint, write USDA, Director, Office of Civil Rights; Room 326W, Jamie L. Whitten Building; 14th and Independence; Washington, D.C. 20250-9410, or call (202) 720-5964 (voice and TDD). USDA is an equal opportunity provider and employer.



Florida Marketing Area Class I Differentials

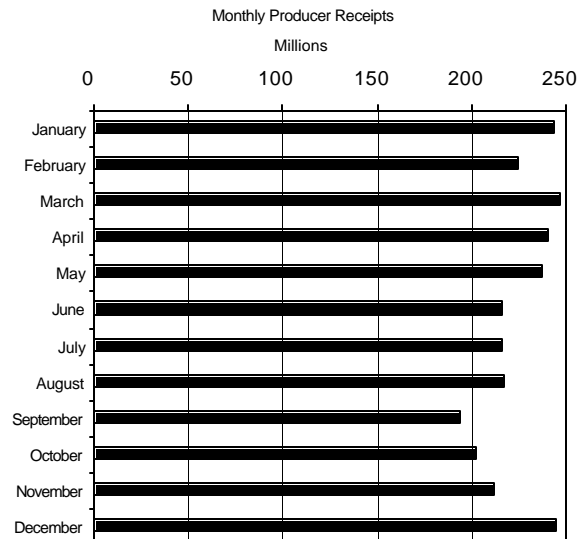
**FLORIDA MARKETING AREA
FEDERAL ORDER NO. 6**

RECEIPTS AND CLASSIFICATION OF PRODUCER MILK AND BUTTERFAT

2002	CLASS I			CLASS II		
	PRODUCT POUNDS	%	BUTTERFAT POUNDS	PRODUCT POUNDS	%	BUTTERFAT POUNDS
January	219,556,067	90.29	4,690,704	14,479,397	5.95	2,413,840
February	202,289,167	90.07	4,338,580	14,631,154	6.51	2,478,051
March	218,189,282	88.35	4,732,832	17,378,438	7.04	3,285,767
April	211,361,149	87.74	4,623,997	18,433,818	7.65	2,991,972
May	207,195,054	87.43	4,557,402	20,400,225	8.61	3,118,581
June	185,973,017	86.19	4,220,574	18,593,421	8.62	2,882,040
July	194,499,149	90.14	4,405,234	17,246,743	7.99	3,097,742
August	199,578,490	91.98	4,547,552	14,130,525	6.51	2,883,188
September	172,532,808	89.20	3,781,220	13,054,591	6.75	2,582,181
October	185,190,127	91.74	4,077,690	13,768,404	6.82	2,801,064
November	191,154,770	90.42	4,344,176	16,579,451	7.84	3,020,268
December	207,107,676	84.63	4,820,386	18,690,465	7.64	2,837,044
Total	2,394,626,756	88.93%	53,140,347	197,386,632	7.33%	34,391,738

2002	CLASS III			CLASS IV		
	PRODUCT POUNDS	%	BUTTERFAT POUNDS	PRODUCT POUNDS	%	BUTTERFAT POUNDS
January	5,143,704	2.12	364,574	3,978,226	1.64	1,542,877
February	1,446,896	0.64	240,776	6,231,556	2.78	1,185,275
March	7,145,400	2.89	358,022	4,240,972	1.71	631,001
April	7,178,388	2.98	374,101	3,934,187	1.62	625,403
May	3,540,783	1.49	252,650	5,854,359	2.47	612,955
June	5,939,822	2.75	404,053	5,271,301	2.44	376,372
July	3,745,616	1.74	234,792	271,387	0.13	194,711
August	2,530,602	1.17	444,468	745,823	0.34	156,240
September	3,933,390	2.03	352,454	3,909,910	2.02	476,855
October	372,139	0.18	106,957	2,541,362	1.26	505,519
November	2,262,648	1.07	214,061	1,410,204	0.67	228,416
December	11,202,901	4.58	346,080	7,729,489	3.15	984,640
Total	54,442,289	2.02%	3,692,988	46,118,776	1.71%	7,520,264

TOTAL PRODUCER RECEIPTS			
2002	PRODUCT POUNDS	%	BUTTERFAT POUNDS
January	243,157,394	100.00	9,011,995
February	224,598,773	100.00	8,242,682
March	246,954,092	100.00	9,007,622
April	240,907,542	100.00	8,615,473
May	236,990,421	100.00	8,541,588
June	215,777,561	100.00	7,883,039
July	215,762,895	100.00	7,932,479
August	216,985,440	100.00	8,031,448
September	193,430,699	100.00	7,192,710
October	201,872,032	100.00	7,491,230
November	211,407,073	100.00	7,806,921
December	244,730,531	100.00	8,988,150
Total	2,692,574,453	100.00%	98,745,337



**FLORIDA MARKETING AREA
FEDERAL ORDER NO. 6**

**RECEIPTS AND CLASSIFICATION OF OTHER SOURCE MILK,
OVERAGES, AND OPENING INVENTORIES**

2002	<u>OTHER SOURCE MILK</u>	<u>OVERAGES</u>	<u>OPENING INVENTORIES</u>	<u>TOTAL</u>
January	25,141,935	116,479	18,989,789	44,248,203
February	18,295,211	56,074	20,290,973	38,642,258
March	19,350,641	114,438	18,726,899	38,191,978
April	17,954,255	23,326	19,991,531	37,969,112
May	19,673,896	222,360	19,480,002	39,376,258
June	14,698,010	34,112	18,006,949	32,739,071
July	21,357,219	14,430	19,907,566	41,279,215
August	27,860,598	82,102	18,289,589	46,232,289
September	42,137,372	325,204	13,849,180	56,311,756
October	48,675,918	74,114	17,873,716	66,623,748
November	39,567,203	118,967	20,184,044	59,870,214
December	23,170,566	87,487	15,674,636	38,932,689
Total	317,882,824	1,269,093	221,264,874	540,416,791

2002	<u>CLASS I</u>	<u>CLASS II</u>	<u>CLASS III</u>	<u>CLASS IV</u>
January	21,291,515	13,736,920	113,629	9,106,139
February	17,570,162	12,331,197	18,410	8,722,489
March	16,436,273	13,874,233	321,892	7,559,580
April	15,305,310	12,813,130	2,228,889	7,621,783
May	16,239,714	14,789,351	0	8,347,193
June	15,366,138	10,517,340	217,913	6,637,680
July	16,883,187	12,956,098	1,736,425	9,703,505
August	23,834,203	12,026,361	3,920,521	6,451,204
September	37,552,503	9,803,990	770,058	8,185,205
October	42,054,399	11,526,271	129,710	12,913,368
November	36,578,359	10,781,026	3,114,916	9,395,913
December	18,722,503	10,519,672	574,090	9,116,424
Total	277,834,266	145,675,589	13,146,453	103,760,483

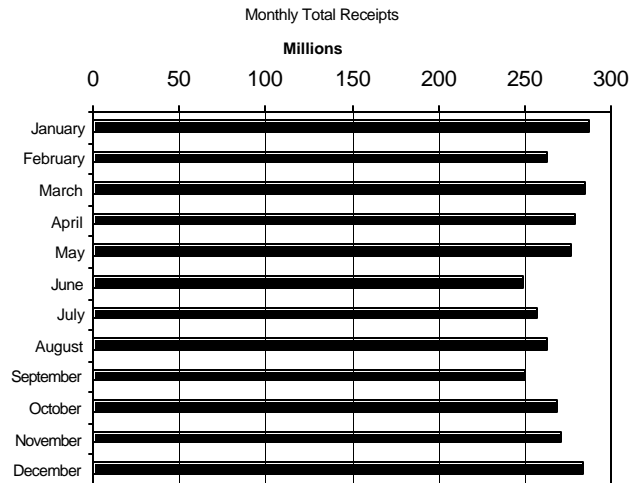
FLORIDA MARKETING AREA
FEDERAL ORDER NO. 6

CLASSIFICATION OF TOTAL RECEIPTS

2002	CLASS I			CLASS II		
	PRODUCT POUNDS	BUTTERFAT POUNDS	BUTTERFAT TEST	PRODUCT POUNDS	BUTTERFAT POUNDS	BUTTERFAT TEST
January	240,847,582	5,168,679	2.15%	28,216,317	2,471,363	8.76%
February	219,859,329	4,731,008	2.15%	26,962,351	2,498,142	9.27%
March	234,625,555	5,084,986	2.17%	31,252,671	3,308,639	10.59%
April	226,666,459	4,963,750	2.19%	31,246,948	3,050,152	9.76%
May	223,434,768	4,921,355	2.20%	35,189,576	3,221,641	9.16%
June	201,339,155	4,548,873	2.26%	29,110,761	2,915,579	10.02%
July	211,382,336	4,768,581	2.26%	30,202,841	3,145,066	10.41%
August	223,412,693	4,977,315	2.23%	26,156,886	3,051,535	11.67%
September	210,085,311	4,566,015	2.17%	22,858,581	2,619,023	11.46%
October	227,244,526	4,965,490	2.19%	25,294,675	2,996,615	11.85%
November	227,733,129	5,142,866	2.26%	27,360,477	3,120,725	11.41%
December	225,830,179	5,243,427	2.32%	29,210,137	2,888,467	9.89%
Total	2,672,461,022	59,082,345	2.21%	343,062,221	35,286,947	10.29%

2002	CLASS III			CLASS IV		
	PRODUCT POUNDS	BUTTERFAT POUNDS	BUTTERFAT TEST	PRODUCT POUNDS	BUTTERFAT POUNDS	BUTTERFAT TEST
January	5,257,333	378,222	7.19%	13,084,365	2,047,389	15.65%
February	1,465,306	259,186	17.69%	14,954,045	1,648,502	11.02%
March	7,467,292	378,841	5.07%	11,800,552	1,084,352	9.19%
April	9,407,277	386,873	4.11%	11,555,970	1,019,171	8.82%
May	3,540,783	252,650	7.14%	14,201,552	1,007,094	7.09%
June	6,157,735	427,970	6.95%	11,908,981	773,454	6.49%
July	5,482,041	292,977	5.34%	9,974,892	714,112	7.16%
August	6,451,123	505,128	7.83%	7,197,027	691,858	9.61%
September	4,703,448	450,949	9.59%	12,095,115	1,122,007	9.28%
October	501,849	156,381	31.16%	15,454,730	1,434,440	9.28%
November	5,377,564	318,885	5.93%	10,806,117	859,268	7.95%
December	11,776,991	354,855	3.01%	16,845,913	1,367,156	8.12%
Total	67,588,742	4,162,917	6.16%	149,879,259	13,768,803	9.19%

TOTAL RECEIPTS			
2002	PRODUCT POUNDS	BUTTERFAT POUNDS	BUTTERFAT TEST
January	287,405,597	10,065,653	3.50%
February	263,241,031	9,136,838	3.47%
March	285,146,070	9,856,818	3.46%
April	278,876,654	9,419,946	3.38%
May	276,366,679	9,402,740	3.40%
June	248,516,632	8,665,876	3.49%
July	257,042,110	8,920,736	3.47%
August	263,217,729	9,225,836	3.51%
September	249,742,455	8,757,994	3.51%
October	268,495,780	9,552,926	3.56%
November	271,277,287	9,441,744	3.48%
December	283,663,220	9,853,905	3.47%
Total	3,232,991,244	112,301,012	3.47%



**FLORIDA MARKETING AREA
FEDERAL ORDER NO. 6**

TOTAL CLASS I UTILIZATION BY POOL HANDLERS

2002	TOTAL CLASS I ROUTE DISPOSITION	TRANSFERRED OR DIVERTED TO NONPOOL PLANTS	ENDING INVENTORY	CLASS I SHRINKAGE
January	225,601,269	416,918	12,848,735	1,980,660
February	205,814,733	551,125	12,316,840	1,176,631
March	221,400,363	663,286	11,460,113	1,101,793
April	212,917,162	796,689	12,340,603	612,005
May	208,974,010	903,541	12,653,482	903,735
June	190,102,299	699,610	10,095,380	441,866
July	199,134,257	539,873	10,491,731	1,216,475
August	211,447,117	313,213	10,309,621	1,342,742
September	198,759,172	195,500	9,730,493	1,400,146
October	212,335,139	171,400	13,635,932	1,102,055
November	214,308,599	345,249	11,657,369	1,421,912
December	214,212,583	163,121	11,162,705	291,770
Total	2,515,006,703	5,759,525	138,703,004	12,991,790

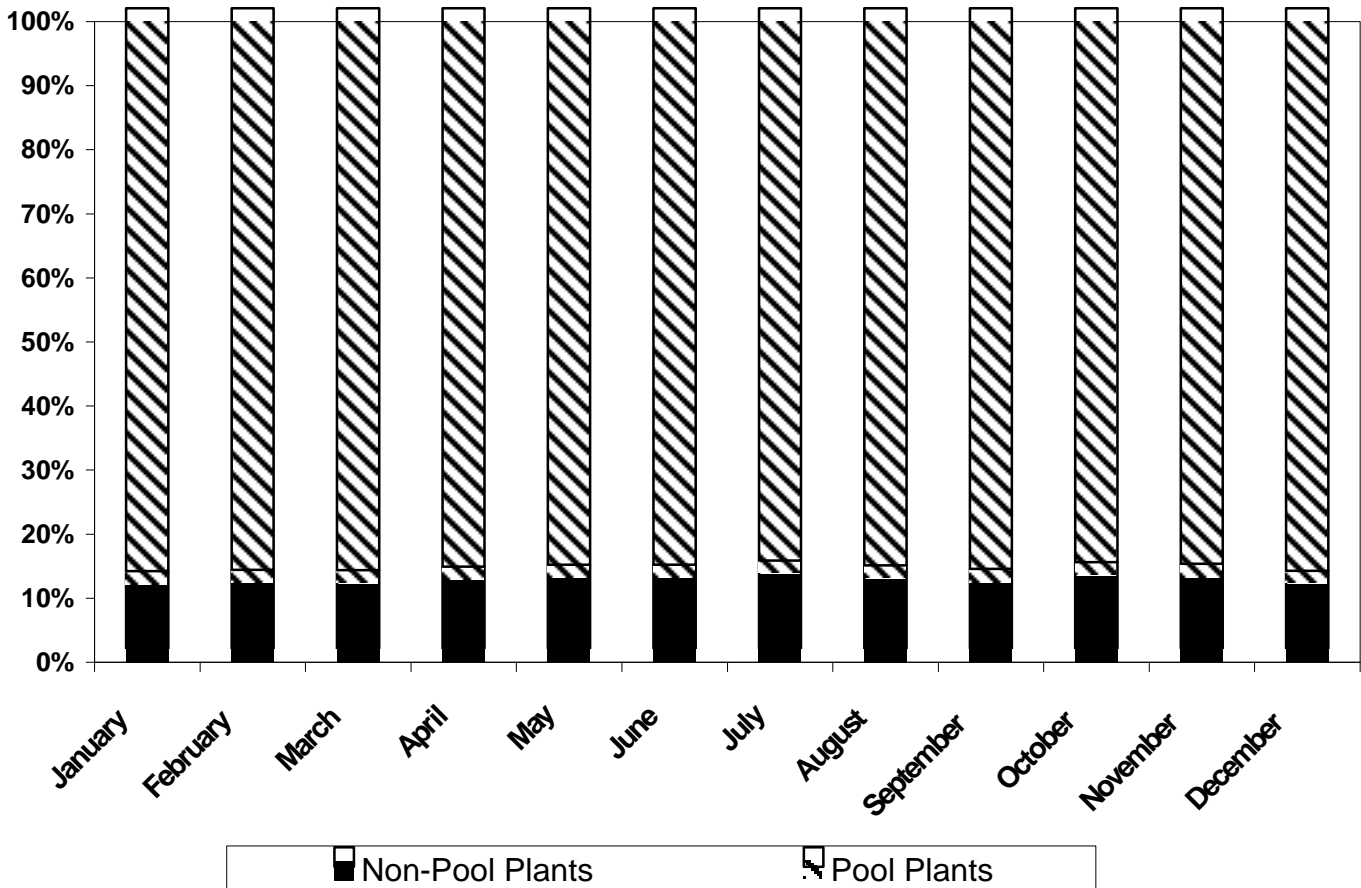
TOTAL CLASS I UTILIZATION

2002	PRODUCT POUNDS	BUTTERFAT POUNDS	BUTTERFAT TEST	DAILY AVERAGE UTILIZATION
January	240,847,582	5,168,679	2.15%	7,769,277
February	219,859,329	4,731,008	2.15%	7,852,119
March	234,625,555	5,084,986	2.17%	7,568,566
April	226,666,459	4,963,750	2.19%	7,555,549
May	223,434,768	4,921,355	2.20%	7,207,573
June	201,339,155	4,548,873	2.26%	6,711,305
July	211,382,336	4,768,581	2.26%	6,818,785
August	223,412,693	4,977,315	2.23%	7,206,861
September	210,085,311	4,566,015	2.17%	7,002,844
October	227,244,526	4,965,490	2.19%	7,330,469
November	227,733,129	5,142,866	2.26%	7,591,104
December	225,830,179	5,243,427	2.32%	7,284,844
Total	2,672,461,022	59,082,345	2.21%	7,321,811

**FLORIDA MARKETING AREA
FEDERAL ORDER 6
ROUTE DISPOSITION IN THE MARKET BY FLORIDA POOL AND NON-POOL PLANTS**

<u>2002</u>	<u>IN-AREA SALES NONPOOL PLANTS</u>	<u>% NONPOOL PLANTS</u>	<u>IN-AREA SALES F.O. 6 POOL PLANTS</u>	<u>TOTAL F.O. 6 IN-AREA SALES</u>
January	30,721,209	12.09%	223,385,442	254,106,651
February	28,665,934	12.31%	204,217,977	232,883,911
March	30,722,545	12.24%	220,211,472	250,934,017
April	31,051,328	12.78%	211,905,091	242,956,419
May	31,430,728	13.11%	208,350,056	239,780,784
June	28,525,826	13.08%	189,484,301	218,010,127
July	31,673,960	13.76%	198,518,339	230,192,299
August	31,478,217	12.99%	210,881,151	242,359,368
September	28,166,986	12.44%	198,211,659	226,378,645
October	32,980,039	13.47%	211,864,090	244,844,129
November	32,596,910	13.23%	213,827,153	246,424,063
December	29,555,585	12.15%	213,704,662	243,260,247
Total	367,569,267	12.80%	2,504,561,393	2,872,130,660

2002 Class I Disposition by Pool & Non-Pool Plants



**FLORIDA MARKETING AREA
FEDERAL ORDER NO. 6**

TOTAL DISPOSITION ON ROUTES INSIDE THE MARKETING AREA BY POOL PLANTS

2002	WHOLE MILK	FAT FREE MILK	LOW FAT MILK	REDUCED FAT MILK	CULTURED MILK	FLAVORED MILK&DRINKS	TOTAL IN AREA
January	96,692,520	32,961,636	24,493,457	51,826,507	1,285,187	16,126,135	223,385,442
February	87,258,130	32,722,175	21,556,879	47,817,029	1,219,039	13,644,725	204,217,977
March	94,281,911	34,723,872	23,523,997	52,115,393	1,362,124	14,204,175	220,211,472
April	91,663,051	30,447,913	21,875,768	50,137,050	1,187,678	16,593,631	211,905,091
May	92,617,637	29,255,028	20,916,074	49,528,234	1,141,094	14,891,989	208,350,056
June	87,207,537	27,027,058	19,669,612	46,680,676	1,057,656	7,841,762	189,484,301
July	91,438,888	28,448,860	20,115,635	49,722,995	1,106,103	7,685,858	198,518,339
August	93,676,147	29,687,531	21,492,801	51,962,922	1,151,670	12,910,080	210,881,151
September	86,780,121	25,420,465	20,065,019	49,756,300	1,026,306	15,163,448	198,211,659
October	91,699,694	29,677,923	21,625,706	51,165,414	1,163,575	16,531,778	211,864,090
November	91,190,113	30,463,054	22,552,654	51,036,428	1,349,992	17,234,912	213,827,153
December	93,292,944	29,099,687	21,040,558	51,726,815	1,272,438	17,272,220	213,704,662
Total	1,097,798,693	359,935,202	258,928,160	603,475,763	14,322,862	170,100,713	2,504,561,393

TOTAL DISPOSITION ON ROUTES OUTSIDE THE MARKETING AREA BY POOL PLANTS

2002	WHOLE MILK	FAT FREE MILK	LOW FAT MILK	REDUCED FAT MILK	CULTURED MILK	FLAVORED MILK&DRINKS	TOTAL OUT OF AREA
January	518,374	117,812	163,818	246,228	0	1,169,595	2,215,827
February	230,234	54,238	39,659	189,506	0	1,083,119	1,596,756
March	306,429	66,033	130,433	257,720	0	428,276	1,188,891
April	251,384	53,359	132,595	188,901	0	385,832	1,012,071
May	36,923	25,497	9,891	66,863	0	484,780	623,954
June	219,033	51,076	42,199	131,291	0	174,399	617,998
July	214,368	51,960	44,414	131,025	0	174,151	615,918
August	171,910	27,525	32,647	101,918	0	231,966	565,966
September	182,931	42,886	35,952	111,836	0	173,908	547,513
October	165,287	25,650	26,315	98,405	0	155,392	471,049
November	148,793	41,052	30,707	95,525	0	165,369	481,446
December	163,576	47,453	42,103	165,582	0	89,207	507,921
Total	2,609,242	604,541	730,733	1,784,800	0	4,715,994	10,445,310

TOTAL DISPOSITION ON ROUTES IN AND OUT OF THE MARKETING AREA BY POOL PLANTS

2002	WHOLE MILK	FAT FREE MILK	LOW FAT MILK	REDUCED FAT MILK	CULTURED MILK	FLAVORED MILK&DRINKS	TOTAL SALES
January	97,210,894	33,079,448	24,657,275	52,072,735	1,285,187	17,295,730	225,601,269
February	87,488,364	32,776,413	21,596,538	48,006,535	1,219,039	14,727,844	205,814,733
March	94,588,340	34,789,905	23,654,430	52,373,113	1,362,124	14,632,451	221,400,363
April	91,914,435	30,501,272	22,008,363	50,325,951	1,187,678	16,979,463	212,917,162
May	92,654,560	29,280,525	20,925,965	49,595,097	1,141,094	15,376,769	208,974,010
June	87,426,570	27,078,134	19,711,811	46,811,967	1,057,656	8,016,161	190,102,299
July	91,653,256	28,500,820	20,160,049	49,854,020	1,106,103	7,860,009	199,134,257
August	93,848,057	29,715,056	21,525,448	52,064,840	1,151,670	13,142,046	211,447,117
September	86,963,052	25,463,351	20,100,971	49,868,136	1,026,306	15,337,356	198,759,172
October	91,864,981	29,703,573	21,652,021	51,263,819	1,163,575	16,687,170	212,335,139
November	91,338,906	30,504,106	22,583,361	51,131,953	1,349,992	17,400,281	214,308,599
December	93,456,520	29,147,140	21,082,661	51,892,397	1,272,438	17,361,427	214,212,583
Total	1,100,407,935	360,539,743	259,658,893	605,260,563	14,322,862	174,816,707	2,515,006,703

**FLORIDA MARKETING AREA
FEDERAL ORDER NO. 6**

DISPOSITION ON ROUTES INSIDE THE MARKETING AREA BY NONPOOL PLANTS

2002	WHOLE MILK	FAT FREE MILK	LOW FAT MILK	REDUCED FAT MILK	CULTURED MILK	FLAVORED MILK&DRINKS	TOTAL NONPOOL
January	12,517,763	5,133,750	4,441,201	6,883,014	149,588	1,595,893	30,721,209
February	9,814,395	4,856,051	3,893,565	7,928,302	144,592	2,029,029	28,665,934
March	11,847,770	5,195,990	4,025,405	6,959,422	141,508	2,552,450	30,722,545
April	12,292,237	4,825,118	4,324,561	6,936,132	133,307	2,539,973	31,051,328
May	12,380,056	4,761,355	4,547,623	7,059,756	129,712	2,552,226	31,430,728
June	11,380,746	4,391,886	4,057,505	6,620,195	122,340	1,953,154	28,525,826
July	12,523,945	4,909,511	4,213,253	7,339,152	134,515	2,553,584	31,673,960
August	12,419,689	4,793,477	3,952,206	7,749,525	140,884	2,422,436	31,478,217
September	11,077,141	4,023,875	3,912,312	6,883,420	123,053	2,147,185	28,166,986
October	12,495,677	4,537,854	4,044,247	7,778,219	128,745	3,995,297	32,980,039
November	12,246,350	4,821,628	3,980,777	7,687,110	157,933	3,703,112	32,596,910
December	11,529,529	4,037,965	3,294,123	7,170,652	138,318	3,384,998	29,555,585
Total	142,525,298	56,288,460	48,686,778	86,994,899	1,644,495	31,429,337	367,569,267

DISPOSITION ON ROUTES INSIDE THE MARKETING AREA BY POOL PLANTS

2002	WHOLE MILK	FAT FREE MILK	LOW FAT MILK	REDUCED FAT MILK	CULTURED MILK	FLAVORED MILK&DRINKS	TOTAL POOL
January	96,692,520	32,961,636	24,493,457	51,826,507	1,285,187	16,126,135	223,385,442
February	87,258,130	32,722,175	21,556,879	47,817,029	1,219,039	13,644,725	204,217,977
March	94,281,911	34,723,872	23,523,997	52,115,393	1,362,124	14,204,175	220,211,472
April	91,663,051	30,447,913	21,875,768	50,137,050	1,187,678	16,593,631	211,905,091
May	92,617,637	29,255,028	20,916,074	49,528,234	1,141,094	14,891,989	208,350,056
June	87,207,537	27,027,058	19,669,612	46,680,676	1,057,656	7,841,762	189,484,301
July	91,438,888	28,448,860	20,115,635	49,722,995	1,106,103	7,685,858	198,518,339
August	93,676,147	29,687,531	21,492,801	51,962,922	1,151,670	12,910,080	210,881,151
September	86,780,121	25,420,465	20,065,019	49,756,300	1,026,306	15,163,448	198,211,659
October	91,699,694	29,677,923	21,625,706	51,165,414	1,163,575	16,531,778	211,864,090
November	91,190,113	30,463,054	22,552,654	51,036,428	1,349,992	17,234,912	213,827,153
December	93,292,944	29,099,687	21,040,558	51,726,815	1,272,438	17,272,220	213,704,662
Total	1,097,798,693	359,935,202	258,928,160	603,475,763	14,322,862	170,100,713	2,504,561,393

TOTAL DISPOSITION ON ROUTES INSIDE THE MARKETING AREA

2002	WHOLE MILK	FAT FREE MILK	LOW FAT MILK	REDUCED FAT MILK	CULTURED MILK	FLAVORED MILK&DRINKS	TOTAL SALES
January	109,210,283	38,095,386	28,934,658	58,709,521	1,434,775	17,722,028	254,106,651
February	97,072,525	37,578,226	25,450,444	55,745,331	1,363,631	15,673,754	232,883,911
March	106,129,681	39,919,862	27,549,402	59,074,815	1,503,632	16,756,625	250,934,017
April	103,955,288	35,273,031	26,200,329	57,073,182	1,320,985	19,133,604	242,956,419
May	104,997,693	34,016,383	25,463,697	56,587,990	1,270,806	17,444,215	239,780,784
June	98,588,283	31,418,944	23,727,117	53,300,871	1,179,996	9,794,916	218,010,127
July	103,962,833	33,358,371	24,328,888	57,062,147	1,240,618	10,239,442	230,192,299
August	106,095,836	34,481,008	25,445,007	59,712,447	1,292,554	15,332,516	242,359,368
September	97,857,262	29,444,340	23,977,331	56,639,720	1,149,359	17,310,633	226,378,645
October	104,195,371	34,215,777	25,669,953	58,943,633	1,292,320	20,527,075	244,844,129
November	103,436,463	35,284,682	26,533,431	58,723,538	1,507,925	20,938,024	246,424,063
December	104,822,473	33,137,652	24,334,681	58,897,467	1,410,756	20,657,218	243,260,247
Total	1,240,323,991	416,223,662	307,614,938	690,470,662	15,967,357	201,530,050	2,872,130,660

**FLORIDA MARKETING AREA
FEDERAL ORDER NO. 6**

TOTAL CLASS II UTILIZATION BY POOL HANDLERS

2002	NONFLUID USED TO PRODUCE	SHRINKAGE	TRANSFERRED OR DIVERTED TO NONPOOL PLANTS	USED TO PRODUCE/ OTHER USES
January	5,002,720	0	3,104,860	20,108,737
February	11,756,635	0	3,244,890	11,960,826
March	13,154,683	0	5,375,555	12,722,433
April	12,393,388	0	6,216,072	12,637,488
May	13,623,803	0	8,094,170	13,471,603
June	10,157,920	0	6,745,601	12,207,240
July	12,616,453	0	5,289,098	12,297,290
August	10,437,981	0	3,353,591	12,365,314
September	7,649,981	0	2,569,409	12,639,191
October	9,559,313	0	2,320,317	13,415,045
November	7,174,419	0	4,644,173	15,541,885
December	8,134,352	0	5,804,391	15,271,394
Total	121,661,648	0	56,762,127	164,638,446

TOTAL CLASS II UTILIZATION

2002	PRODUCT POUNDS	BUTTERFAT POUNDS	BUTTERFAT TEST	DAILY UTILIZATION
January	28,216,317	2,471,363	8.76%	910,204
February	26,962,351	2,498,142	9.27%	962,941
March	31,252,671	3,308,639	10.59%	1,008,151
April	31,246,948	3,050,152	9.76%	1,041,565
May	35,189,576	3,221,641	9.16%	1,135,148
June	29,110,761	2,915,579	10.02%	970,359
July	30,202,841	3,145,066	10.41%	974,285
August	26,156,886	3,051,535	11.67%	843,771
September	22,858,581	2,619,023	11.46%	761,953
October	25,294,675	2,996,615	11.85%	815,957
November	27,360,477	3,120,725	11.41%	912,016
December	29,210,137	2,888,467	9.89%	942,262
Total	343,062,221	35,286,947	10.29%	939,896

**FLORIDA MARKETING AREA
FEDERAL ORDER NO. 6**

TOTAL CLASS III UTILIZATION BY POOL HANDLERS

2002	<u>SHRINKAGE 1/</u>	<u>TRANSFERRED OR DIVERTED TO NONPOOL PLANTS</u>	<u>USED TO PRODUCE/ OTHER USES 2/</u>
January	3,040,978	891,862	1,324,493
February	0	1,465,306	0
March	3,256,979	3,012,405	1,197,908
April	3,611,612	4,708,700	1,086,965
May	0	3,540,783	0
June	3,043,121	2,210,767	903,847
July	3,324,217	1,110,697	1,047,127
August	3,615,094	1,649,695	1,186,334
September	2,279,898	1,378,725	1,044,825
October	0	501,849	0
November	3,726,447	639,679	1,011,438
December	3,867,206	6,581,181	1,328,604
Total	29,765,552	27,691,649	10,131,541

TOTAL CLASS III UTILIZATION

2002	<u>PRODUCT POUNDS</u>	<u>BUTTERFAT POUNDS</u>	<u>BUTTERFAT TEST</u>	<u>DAILY AVERAGE UTILIZATION</u>
January	5,257,333	378,222	7.19%	169,591
February	1,465,306	259,186	17.69%	52,332
March	7,467,292	378,841	5.07%	240,880
April	9,407,277	386,873	4.11%	313,576
May	3,540,783	252,650	7.14%	114,219
June	6,157,735	427,970	6.95%	205,258
July	5,482,041	292,977	5.34%	176,840
August	6,451,123	505,128	7.83%	208,101
September	4,703,448	450,949	9.59%	156,782
October	501,849	156,381	31.16%	16,189
November	5,377,564	318,885	5.93%	179,252
December	11,776,991	354,855	3.01%	379,903
Total	67,588,742	4,162,917	6.16%	185,175

1/ Pursuant § 1000.43 (b) (1). Assigned to lowest priced class.

2/ Pursuant § 1000.40 (e). Assigned to lowest priced class.

**FLORIDA MARKETING AREA
FEDERAL ORDER NO. 6**

TOTAL CLASS IV UTILIZATION BY POOL HANDLERS

2002	ENDING INVENTORY	NONFLUID USED TO FORTIFY	SHRINKAGE 1/	TRANSFERRED OR DIVERTED TO NONPOOL PLANTS	USED TO PRODUCE/ OTHER USES 2/
January	7,442,238	1,659,411	0	3,982,716	0
February	6,410,059	1,592,404	3,328,688	2,650,152	972,742
March	8,531,418	1,587,293	0	1,681,841	0
April	7,139,399	1,624,768	0	2,791,803	0
May	5,353,469	1,531,067	3,422,303	2,812,068	1,082,645
June	9,812,186	1,249,586	0	847,209	0
July	7,797,858	1,396,670	0	780,364	0
August	3,539,559	2,134,398	0	1,523,070	0
September	8,147,494	2,201,349	0	1,746,272	0
October	6,548,112	2,339,271	2,680,571	2,372,370	1,514,406
November	4,017,267	4,428,812	0	2,360,038	0
December	5,243,596	4,623,518	0	6,978,799	0
Total	79,982,655	26,368,547	9,431,562	30,526,702	3,569,793

TOTAL CLASS IV UTILIZATION

2002	PRODUCT POUNDS	BUTTERFAT POUNDS	BUTTERFAT TEST	DAILY UTILIZATION
January	13,084,365	2,047,389	15.65%	422,076
February	14,954,045	1,648,502	11.02%	534,073
March	11,800,552	1,084,352	9.19%	380,663
April	11,555,970	1,019,171	8.82%	385,199
May	14,201,552	1,007,094	7.09%	458,115
June	11,908,981	773,454	6.49%	396,966
July	9,974,892	714,112	7.16%	321,771
August	7,197,027	691,858	9.61%	232,162
September	12,095,115	1,122,007	9.28%	403,171
October	15,454,730	1,434,440	9.28%	498,540
November	10,806,117	859,268	7.95%	360,204
December	16,845,913	1,367,156	8.12%	543,417
Total	149,879,259	13,768,803	9.19%	410,628

1/ Pursuant § 1000.43 (b) (1). Assigned to lowest priced class.

2/ Pursuant § 1000.40 (e). Assigned to lowest priced class.

**FLORIDA MARKETING AREA
FEDERAL ORDER NO. 6
ANNOUNCED FEDERAL ORDER CLASS & UNIFORM PRICES**

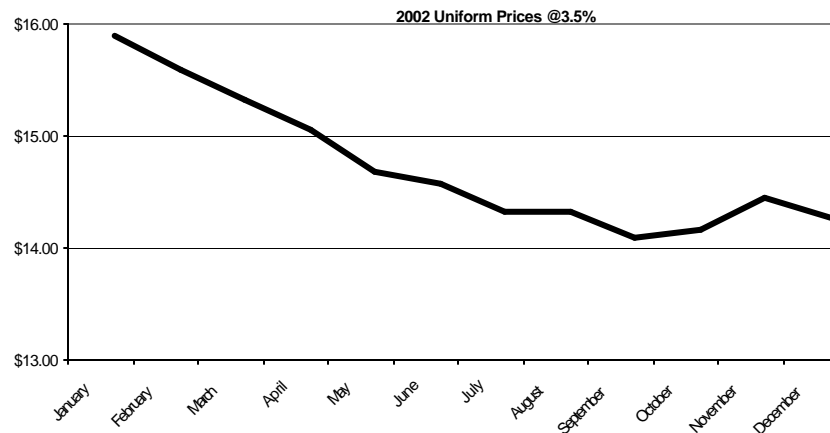
CLASS I*			
2002	Skim	Butterfat	Milk @ 3.5%
January	\$11.34	\$1.4339	\$15.96
February	\$10.99	\$1.5260	\$15.95
March	\$11.10	\$1.4017	\$15.62
April	\$10.91	\$1.4133	\$15.47
May	\$10.83	\$1.3739	\$15.26
June	\$11.23	\$1.1977	\$15.03
July	\$10.85	\$1.1843	\$14.62
August	\$10.86	\$1.1422	\$14.48
September	\$10.92	\$1.1205	\$14.46
October	\$10.91	\$1.0335	\$14.15
November	\$11.20	\$1.0823	\$14.60
December	\$10.99	\$1.1182	\$14.52
Average	\$11.01	\$1.2523	\$15.01

CLASS II			
2002	Skim	Butterfat	Milk @ 3.5%
January	\$7.74	\$1.4916	\$12.69
February	\$7.69	\$1.3887	\$12.28
March	\$7.66	\$1.3708	\$12.19
April	\$7.61	\$1.2960	\$11.88
May	\$7.53	\$1.1503	\$11.29
June	\$7.50	\$1.1281	\$11.19
July	\$7.55	\$1.0999	\$11.14
August	\$7.56	\$1.0771	\$11.07
September	\$7.62	\$1.0169	\$10.91
October	\$7.61	\$1.0796	\$11.12
November	\$7.68	\$1.0993	\$11.26
December	\$7.69	\$1.1992	\$11.62
Average	\$7.62	\$1.1998	\$11.55

CLASS III			
2002	Skim	Butterfat	Milk @ 3.5%
January	\$6.92	\$1.4846	\$11.87
February	\$7.04	\$1.3817	\$11.63
March	\$6.09	\$1.3638	\$10.65
April	\$6.57	\$1.2890	\$10.85
May	\$7.07	\$1.1433	\$10.82
June	\$6.39	\$1.1211	\$10.09
July	\$5.70	\$1.0929	\$9.33
August	\$6.00	\$1.0701	\$9.54
September	\$6.62	\$1.0099	\$9.92
October	\$7.22	\$1.0726	\$10.72
November	\$6.23	\$1.0923	\$9.84
December	\$5.77	\$1.1922	\$9.74
Average	\$6.47	\$1.1928	\$10.42

CLASS IV			
2002	Skim	Butterfat	Milk @ 3.5%
January	\$6.98	\$1.4846	\$11.93
February	\$6.95	\$1.3817	\$11.54
March	\$6.89	\$1.3638	\$11.42
April	\$6.82	\$1.2890	\$11.09
May	\$6.81	\$1.1433	\$10.57
June	\$6.84	\$1.1211	\$10.52
July	\$6.87	\$1.0929	\$10.45
August	\$6.91	\$1.0701	\$10.41
September	\$6.93	\$1.0099	\$10.22
October	\$6.99	\$1.0726	\$10.50
November	\$7.00	\$1.0923	\$10.58
December	\$6.55	\$1.1922	\$10.49
Average	\$6.88	\$1.1928	\$10.81

UNIFORM*			
2002	Skim	Butterfat	Milk @ 3.5%
January	\$11.03	\$1.4606	\$15.76
February	\$10.72	\$1.4602	\$15.46
March	\$10.72	\$1.3867	\$15.20
April	\$10.54	\$1.3586	\$14.93
May	\$10.47	\$1.2694	\$14.55
June	\$10.74	\$1.1651	\$14.44
July	\$10.54	\$1.1469	\$14.19
August	\$10.66	\$1.1139	\$14.19
September	\$10.59	\$1.0710	\$13.97
October	\$10.71	\$1.0544	\$14.03
November	\$10.89	\$1.0899	\$14.32
December	\$10.47	\$1.1552	\$14.15
Average	\$10.67	\$1.2277	\$14.60



* Class 1 and Uniform Prices are at Hillsborough County (Tampa), Florida

**FLORIDA MARKETING AREA
FEDERAL ORDER NO. 6**

**NASS DAIRY PRODUCT PRICE AVERAGES USED IN
FEDERAL MILK ORDER PRICE FORMULAS**

Class I (Skim, Bfat), Class II (Skim, Nonfat Solids)

2002	<u>Weeks Ending</u>	<u>Butter</u>	<u>Nonfat Dry Milk</u>	<u>Cheese</u>	<u>Dry Whey</u>
Dollars per pound					
January	12/8,15	1.2580	0.9222	1.2895	0.2902
February	1/5,12	1.3335	0.9166	1.2740	0.2810
March	2/9,16	1.2316	0.9133	1.2862	0.2347
April	3/9,16	1.2411	0.9074	1.2008	0.2077
May	4/6,13	1.2088	0.8984	1.2229	0.1979
June	5/4,11	1.0643	0.8953	1.2521	0.1827
July	6/8,15	1.0533	0.9006	1.1792	0.1663
August	7/6,13	1.0188	0.9025	1.1098	0.1552
September	8/10,17	1.0010	0.9091	1.1237	0.1559
October	9/7,14	0.9297	0.9080	1.1427	0.1703
November	10/5,12	0.9697	0.9159	1.1921	0.2081
December	11/9,16	0.9991	0.9172	1.0985	0.2234

Class II (Bfat), Class III, Class IV, Components

2002	<u>Weeks Ending</u>	<u>Butter</u>	<u>Nonfat Dry Milk</u>	<u>Cheese</u>	<u>Dry Whey</u>
Dollars per pound					
January	1/5,12,19,26	1.3324	0.9161	1.2922	0.2747
February	2/2,9,16,23	1.2480	0.9121	1.2895	0.2334
March	3/2,9,16,23,30	1.2333	0.9060	1.2087	0.2066
April	4/6,13,20,27	1.1720	0.8975	1.2323	0.1948
May	5/4,11,18,25	1.0525	0.8972	1.2359	0.1759
June	6/1,8,15,22,29	1.0343	0.9005	1.1708	0.1639
July	7/6,13,20,27	1.0112	0.9033	1.1004	0.1545
August	8/3,10,17,24	0.9925	0.9074	1.1189	0.1571
September	8/31,9/7,14,21,28	0.9431	0.9096	1.1438	0.1755
October	10/5,12,19,26	0.9945	0.9165	1.2020	0.2131
November	11/2,9,16,23	1.0107	0.9177	1.1111	0.2223
December	11/30,12/7,14,21,28	1.0926	0.8682	1.1203	0.1965

**FLORIDA MARKETING AREA
FEDERAL ORDER NO. 6
2002 POOL HANDLERS**

Fluid Milk Distributing Pool Plants §1006.7(a)

	J	F	M	A	M	J	J	A	S	O	N	D
Gustafson's Dairy, Inc. Green Cove Springs, Florida	X	X	X	X	X	X	X	X	X	X	X	X
McArthur Dairy, Inc. Miami, Florida	X	X	X	X	X	X	X	X	X	X	X	X
Publix Supermarkets, Inc. Deerfield Beach, Florida	X	X	X	X	X	X	X	X	X	X	X	X
Publix Supermarkets, Inc. Lakeland, Florida	X	X	X	X	X	X	X	X	X	X	X	X
Ryan Foods Company Jacksonville, Florida	X	X	X	X	X	X	X	X	X	X	X	X
Sunbelt Dairy & Food Company Tampa, Florida	X	X	X	X	X	X	X	X	X	X	X	X
Superbrand Dairy Products, Inc. Miami, Florida	X	X	X	X	X	X	X	X	X	X	X	X
Superbrand Dairy Prod., Inc. Plant City, Florida	X	X	X	X	X	X	X	X	X	X	X	X
T.G. Lee Foods, Inc. Orange City, Florida	X	X	X	X	X	X	X	X	X	X	X	X
T.G. Lee Foods, Inc. Orlando, Florida	X	X	X	X	X	X	X	X	X	X	X	X
Velda Farms, LLC Miami, Florida	X	X	X	X	X	X	X	X	X	X	X	X
Velda Farms, LLC Winter Haven, Florida	X	X	X	X	X	X	X	X	X	X	X	X

Cooperatives Qualifying as Pool Handlers §1006.9(c)

	J	F	M	A	M	J	J	A	S	O	N	D
Dairy Farmers of America, Inc. Kansas City, Missouri	X	X	X	X	X	X	X	X	X	X	X	X
Southeast Milk, Inc. Bellevue, Florida	X	X	X	X	X	X	X	X	X	X	X	X

**FLORIDA MARKETING AREA
FEDERAL ORDER NO. 6
NONPOOL PLANTS WITH ROUTE DISPOSITION IN THE AREA - 2002**

J	F	M	A	M	J	J	A	S	O	N	D
---	---	---	---	---	---	---	---	---	---	---	---

Other Order Plants §1000.8(a)

Federal Order #1

Dannon Milk Products West Jordan, Utah	X	X	X	X	X	X	X			X		X
H. P. Hood, Inc. Oneida, New York	X	X	X	X	X	X	X	X	X	X	X	X
H. P. Hood, Inc. Winchester, Virginia	X	X	X	X	X	X	X	X	X	X	X	X
Morningstar Foods Fraser, New York										X	X	X
Morningstar Foods Mount Crawford, Virginia	X	X				X	X				X	X
Steuben Foods Elma, New York								X	X	X	X	X
Tuscan/Lehigh Valley Dairies Union, New York											X	X

Federal Order #5

Coburg Dairy, Inc. Charleston, South Carolina										X	X	X
Milkco Inc. Asheville, North Carolina	X	X	X	X	X	X	X	X	X	X	X	X
Regis Milk Company Charleston, South Carolina	X	X	X	X	X	X	X	X	X	X	X	X
Superbrand Dairy Products, Inc. Greenville, South Carolina	X	X	X	X	X	X	X	X	X	X	X	X
Superbrand Dairy Products, Inc. High Point, North Carolina	X	X	X	X	X	X	X	X	X	X	X	X

Federal Order #7

Country Delite Farms Nashville, Tennessee	X	X	X	X	X	X	X	X	X	X	X	X
--	---	---	---	---	---	---	---	---	---	---	---	---

	J	F	M	A	M	J	J	A	S	O	N	D
Dairy Fresh Corporation Cowarts, Alabama	X	X	X	X	X	X	X	X	X	X	X	X
New Atlanta Dairies, Inc. Atlanta, Georgia	X	X	X	X	X	X	X	X	X	X	X	X
Publix Supermarkets, Inc. Atlanta, Georgia	X	X	X	X	X	X	X	X	X	X	X	X
Ryan Foods Company Murray, Kentucky	X	X	X	X	X	X	X	X	X	X	X	X
Superbrand Dairy Products. Inc. Montgomery, Alabama	X	X	X	X	X	X	X	X	X	X	X	X
Turner Holdings LLC/Gold Star Little Rock, Arkansas	X	X	X	X	X	X	X	X	X	X	X	X

Federal Order #30

Kohler Mix Specialties, Inc. White Bear Lake, Minnesota	X	X	X	X	X	X	X	X	X	X	X	X
Lifeway Foods, Inc. Morton Grove, Illinois	X	X	X	X	X	X	X	X	X	X	X	X
Pride of Main Street Dairy, LLC Sauk Centre, Minnesota					X	X	X	X	X	X	X	X
Schroeder Milk Company, Inc. Maplewood, Minnesota					X			X	X	X		

Federal Order #33

Parmalat-White Knight Packaging Wyoming, Michigan	X	X	X	X	X	X	X	X	X	X	X	X
--	---	---	---	---	---	---	---	---	---	---	---	---

Federal Order #126

Morningstar Foods Suphur Springs, Texas									X	X		X
Promised Land Dairy Floresville, Texas	X	X	X	X	X	X	X	X	X	X	X	X

Federal Order #135

Gossner Foods Logan, Utah	X	X	X	X	X	X	X	X	X	X	X	X
------------------------------	---	---	---	---	---	---	---	---	---	---	---	---

J	F	M	A	M	J	J	A	S	O	N	D
---	---	---	---	---	---	---	---	---	---	---	---

Exempt Distributing Plants §1000.8(e)

Golden Fleece Lecanto, Florida	X	X	X	X	X	X	X	X	X	X	X	X
M & B Dairy Products Tampa, Florida	X	X	X	X	X	X	X	X	X	X	X	X

Partially Regulated Distributing Plants §1000.8(c)

Alta Dena Dairy City of Industry, California												X
Cacique Company City of Industry, California	X	X	X	X	X	X	X	X	X	X	X	X
Dannon Milk Products Fort Worth, Texas	X	X	X	X	X	X	X	X	X	X	X	X
Jasper Products, LLC Joplin, Missouri			X	X	X	X	X	X	X	X	X	X
Milk Products of Alabama Decatur, Alabama	X	X	X	X	X	X	X	X	X	X	X	X
Morningstar Foods Sulphur Springs, Texas			X	X	X	X	X				X	
Morningstar Gustine Gustine, California						X	X					
Savannah Manufacturing Company Savannah, Georgia			X	X	X							